

Fish recorded on Whareroa Farm 2022 and 2007

all photos and links from iNaturalist.org

Fish recorded in the waterways of Whareroa Farm are from an eDNA survey in 2022 and a 2007 survey carried out by Karen Palmer for her Massey University thesis. Locations selected were in the Carex Valley, the Whareroa Stream South branch (above the water intake & above the Ramaroa stream junction) and two points in the Ramaroa Stream. Note too, that Koura have also been sighted in Ti Kouka.

Click on the links or the pictures to find out how more.

[Banded kokopu \(*Galaxias fasciatus*\)](#)



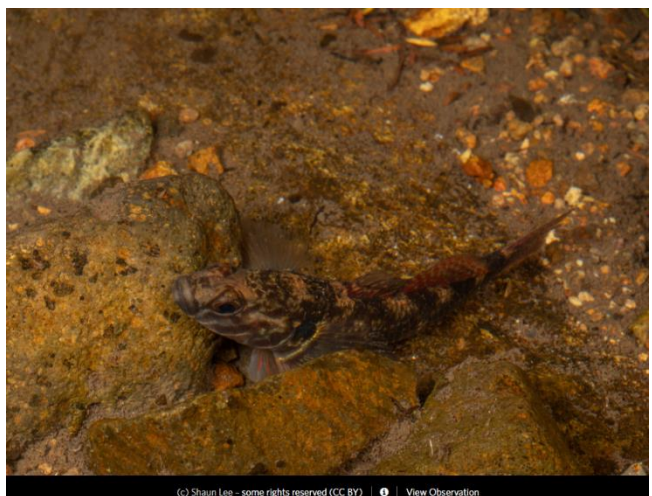
[Climbing galaxias or kōaro \(*Galaxias brevipinnis*\)](#)



[Northern Koura \(*Paranephrops planifrons*\)](#)



[Redfin Bully \(*Gobiomorphus huttoni*\)](#)



Fish recorded on Whareroa Farm 2022 and 2007

all photos and links from iNaturalist.org

[Shortjaw Kokopu \(*Galaxias postvectis*\)](#)
(Endangered)



[Giant Kokopu \(*Galaxias argenteus*\)](#)
(Vulnerable)



[Short-finned Eel \(*Anguilla australis*\)](#)
(Near threatened)



[Long-finned Eel \(*Anguilla dieffenbachia*\)](#)
(Endangered)

