

# WHAREROA GUARDIANS COMMUNITY TRUST

## Updates for Supporters 2012



Planting volunteers June 2012



## Whareroa. Update for Supporters, 3<sup>rd</sup> Feb 2012

Welcome to another year at Whareroa. It is great to see so many people enjoying it.

**Next working bee will be Sunday 12<sup>th</sup> Feb, 9-to-noon.** This will be jointly with DOC staff to weed the plants at the entrance and picnic areas – long grass, thistle and other weeds are smothering plants. As usual, morning tea provided. Bring grubbers and/or shears and gloves. These plants are establishing well and it'll be good to give them a hand.

### **Whareroa Open Day and Picnic. Sunday 19<sup>th</sup> February. 11am to 5pm.**

Bring your friends and family and enjoy a day on the farm. Picnic in the Dell at lunch time. The Kapiti Mountain Bike Club and Whareroa Guardians will offer guided rides and walks and generally be available to introduce the public to the delights at Whareroa. If you would like to help on the day, eg putting out signs, being a guide, chatting to the public, please drop us an email or phone Ann at 904 7114. Thanks.

### **Future Dates:**

Working bees return to the usual 1<sup>st</sup> Sunday, 9-noon: March 4<sup>th</sup>, April 1<sup>st</sup>, May 6<sup>th</sup>

Another date for the diary. Rugby Legends Planting Day. Saturday May 26<sup>th</sup>

The **December 4th working bee** in the Upper Dell was very pleasant. Lots of plants (donated by Nicola and Al) were rediscovered and released and the path opened up. There is still more to do (as always). Many thanks to: Bill Sewell, Ann Evans, Michael Stace, Liffet Stewart, Sascha Wassong, Al Edwards, Nicola Easthope, Peter Davis and Dawn Bush while Bernard Cammack worked on the Dell access path. Yummy muffins, thanks Nicola.





Sascha, Peter and Liffet track cutting

### **Other Whareroa news:**

Grant Nicol has put out two “Henry” **possum traps** with some success. These kill the possum instantly and reset themselves.

**Ti Kouka plantings** are growing amazingly – the regular rain so far this summer has been so good. Grass overtopped the smaller plants and some may have been lost but overall survival is excellent. Releasing is still needed and a number of volunteers have been in doing this regularly including Dawn Bush, Liffet Stewart, Sue Blaikie, Ann Evans, Don and Mary Beggs and Dave Allen. Anyone is very welcome to go in and help the process for an hour or so at any time. An access path has been cleared through the long grass. It is helpful for the Guardians in grant applications to know how much voluntary work is donated so a quick email letting us know if you have been busy would be appreciated. Thanks.

Following our experience with planting root trainer manuka and kanuka last year we have decided that any future small plantings will need protection covers both to protect from pukekos and make it easier to find them. That doubles the cost of each plant but we feel it would be worth while.

Helen and Tony Griffiths continue their regular **bird monitoring**. They are building up a good data base and will do it for a year. It will be interesting to then repeat it in 5 years or so. Moreporks are heard in the late evening and one was seen early one morning along the Upper Link Track.

**Kapiti Mountain Bike Club** are advancing their plans to develop downhill tracks by assessing possible routes. They are going to put up two small gates instead of the current loose field gates across the upper Link Track to secure the farm from cattle from Campbell’s Mill Rd. It is hoped that a better long term system will be sorted soon.



Dan and Ann find the way, SE Ridge



Jan and Liffet tackle variegated thistle

### **Links with QE Park Nursery and gathering seeds on Whareroa**

QE Park has a productive nursery, growing plants from local seeds. We would like to develop an ongoing relationship with the nursery. There is a regular “potting up” working bee every Wednesday morning from 9.30am and more volunteers are needed. If “Whareroa volunteers” are involved we will be able to obtain some plants. If anyone can offer their time on a reasonably regular basis, please let us know.

Also seed gathering will be needed soon. It is a matter of observing when they are ready and then doing the gathering, with the QEP nursery staff. Would anyone be interested in coordinating this, or helping? Again, please let us know.

After preparing detailed “mini plans” DOC has commissioned Peter Handford to complete the **Farm Management Plan** by the end of April. Thanks to the members of the various groups: Recreation, Restoration, Farm, Heritage and Information for their work.

We look forward to meeting up with you on the farm during 2012. Again, thank you for all the work you put in to develop and maintain the farm.

*From the Whareroa Guardians: John Lancashire, Michael Keith, Ann Evans, Rachel Kiel-Taylor, Jenny Rowan, John Porter, Carol Reihana, Liffet Stewart, Bob Zuur and Sue Blaikie.*





**WHAREROA  
GUARDIANS  
COMMUNITY TRUST**



# **Whareroa Farm Open Day and Picnic**

**Sunday February 19<sup>th</sup>  
11am to 5pm**

**Mackay's Crossing Paekakariki**  
(opposite the entrance to QE Park on the other side of the highway)

**Bush and paddock walks  
streams and picnic areas**

**Try the new mountain bike  
and tramping track  
up to Campbell's Mill Road**

**Guided bike and walking trips**

**Whareroa Guardians and  
Kapiti Mountain Bike Club members  
will be around to assist**





## Whareroa Supporters Update 22 February 2012

What a great day for the **Picnic/Open Day** - perfect weather, warm and overcast. We estimate well over 200 visitors went through including a walking group of 21 from Island Bay and lots who hadn't been there before. Walkers, bikers and a group of horses. One group went right through to Orange Hut. There was lots of interest in the proposed future tracks. Having both Guardians and Mountain Bike Club based at the Hub worked very well.



Almost everyone stopped for a chat and quite a few took membership application forms.

It reinforced the need for toilets in the centre of the farm as when people are in there for a while they need facilities.

Kereru put on aerobatic displays and the bell birds called.

It was a pity it clashed with the Kapiti women's triathlon - but difficult avoiding clashes at this time of year. Local radio and Kapiti Observer gave publicity – thanks to them.

It's always nice to see the Farm Ribbons displayed – a reminder that during Lands and Survey management Whareroa bred prize winning Charolais cattle. Dawn and Penny did some more weeding by the entrance in between greeting visitors!



Overlanders walking group



Sara Shepherd & Ally Pearson

Many thanks to everyone who helped with preparation and chatting to and guiding visitors.

## Last Working Bee Feb 11<sup>th</sup>

A very productive session cleared weeds from around all the plants at the entrance by the car park. It was good to work with Dan Touhy and Shaun Dunning from DOC. Ruby brought along her younger brother Kieran who got stuck in. Ruby took photos. It was good to see new faces, including some from Europe, visiting NZ for a while.

**Many thanks to:** Johannes, Jan Nisbet, Simon Calcinai, Anna, Ruby & Kieran Durrant-Bush, Sascha Wassong, Sue Blaikie, Tony & Helen Griffiths, Liffet Stewart, Dawn Bush, Peter Kentish, Penny Redward, Bill Jensen, Julie Lines, Salla Valkeajarvi, Shaun Dunning, Dan Touhy, Ann Evans and Lyn Ellis.



Also thanks to others who we know have been on the farm “working” at other times: Don & Mary Beggs, Dave Allen, Grant Nichol & Bernard Cammack as well as “Gorse Busters” Jan, Ann, Liffet, Penny and Sue.



Kieran and big weed



Ngaio in the Dell, totara behind

## **Other News**

Peter Russell from Aotearoa Biodiversity Co Ltd paid a pro bono visit to the Ramaroa Bush with Guardians to discuss **weed problems**. There is a large area of tradescantia, as well as other nasties including banana passion fruit, convolvulus, blackberry and others. We will be applying for a grant to clear weeds from the Ramaroa Bush as well as to undertake a weed survey of all the bush blocks. A proposed track will go through this bush and the public would not be able to go through until the tradescantia is cleared as just a small piece caught on a boot could sprout elsewhere.

**Cairn building** is to be deferred to early 2013 as Sascha heads overseas for a period.

**Marines 70<sup>th</sup> anniversary**. May 2012. There will be events in QE Park and at Whareroa. Check local papers.

**Rugby Legends Planting Day** Saturday May 26<sup>th</sup>.

**Next Working Bee. Sunday 4<sup>th</sup> March**. Dawn will coordinate. Weeding of new plantings by the picnic area. Most useful tools: grubbers and forks. 9am to noon. Morning tea provided.

*Again, many thanks for your support. From the Whareroa Guardians.*



## Whareroa Supporters Update 26 March 2012

Hello Everyone.

**Next working bee on 1st April will be different.** First we will do more clearing of weeds by the picnic area until morning tea. Then Rob Craven, manager at QE Park nursery will lead a workshop on collecting and growing seeds to provide plants from Whareroa plants - the ultimate in ecosourcing!

**The last working bee** was attended by a few hardy souls after the "weather bomb". Many thanks to Dawn Bush, Ian and Penny Redward, Mary Beggs and June and Fred Rowland. A good heap of weeds was produced and there is a visible difference.

### **AGM. 7pm Thursday 12th April in the meeting room at Paraparaumu Library**

The term of 3 trustees expires: John Porter, John Lancashire and Bob Zuur.

John Porter has decided not to stand again John was one of the initiators of the original campaign to save the farm - the community owes him a debt and we will miss his regular contributions though he will continue to give us the benefit of his historic knowledge.

Both John Lancashire and Bob Zuur are available for re-election.

Please consider whether you would be prepared to stand. Nomination forms will be at the meeting.

If there are more than three names nominated there will be a secret ballot.

Only paid up members may nominate, be a candidate or vote. Sue Blaikie will be on deck to accept your subscriptions at the AGM (Treasurer Michael will be overseas). Alternatively you may download the attached forms - for new members or renewal and either post a cheque or pay directly into our bank account (details on the forms).

After the AGM, **Bob Zuur** will give a talk with photos from his recent trip to **Antarctica** with Gareth Morgan's "Deep South" expedition. Bob is a marine biologist and works for WWF-NZ and has a strong interest in bioprotection.



Looking down SE Ridge



Looking down Ramaroa Valley

### **Farm Plan**

Peter Handford is working on this, with completion expected by the end of April. It will be good to have clarification of the long term plans for Whareroa based on land use capability with input from the Guardians.

**The photos** show views of Whareroa from below Campbell Mill Road - it is well worth a wander south along the Whareroa boundary to see the natural regrowth in the upper gullies. In many places gorse has disappeared. The photo of the **Marines'** camps is included as the **70th anniversary** of their presence in Kapiti will be celebrated in May. Trustees John Porter and Jenny Rowan are on the Marines' Trust and various activities are planned. More in the next update.



**Plants.** This has been a wonderful summer for plants with regular rain. Last year's Ti Kouka plants have thrived. Interestingly, the recent storm damaged several 4 foot coprosmas in the Ramaroa plantings, twisting them out of the ground. Most were fine.

Today was the **KCDC Sustainable Show** - Whareroa had a small display alongside many other Kapiti restoration groups. The range of activity and commitment is phenomenal. What a contribution to the environment, the community and the future.



Plantings along Ramaroa Stream



Liffet clearing weed out of water intake settlement chamber

A reminder that releasing from long grass is beneficial, many volunteers do an hour or so when they can - if enjoying the farm do feel free to clear a few plants while you're there. Many thanks to those volunteers who beaver away between the working bees, as well as those who join us at the regular sessions.

Hope to see many of you at the AGM





## Whareroa Supporters' Update. 10 April 2012

Another busy month

**Working Bee 1<sup>st</sup> April.** A good session clearing more weeds from the entrance area. This is a huge job – in 3 sessions, we have done perhaps half of the area. We decided to concentrate on tall weeds and those choking plants and to ignore the flat in-between weeds.

**Many thanks to:** Bill Jansen, Michael Stace, Tony & Helen Griffiths, Sue Blaikie, Rob Craven, Johannes Pankerteld, Penny & Ian Redward, Peter Kentish, June & Fred Rowland, Philippa Ruegg, Lyn Ellis, Peter Davis, David Allen, Dawn Bush, Simon Calcinai, Robyn and Anfri Hayward, Linda Kerkmeester, Angela McArthur and Ann Evans.



In the second half of the morning, some continued weeding. Others went to QEPark for a workshop on growing our own plants led by nursery manager Rob Craven. This was very informative and several volunteers are keen to get involved with seed gathering and propagation, sharing the facilities at QEPark. Volunteers will be looking at trees in a new way, checking flowering and fruiting and gathering seeds. Rob stressed the importance of keeping detailed records. We learnt how to differentiate toetoe and pampas and were able to confirm a suspicious plant was indeed pampas. It is no more (see picture). Many thanks Rob for a stimulating session.



Theo Barsanti and Sascha Wassong moved stones up to the Cairn site in Theo's landrover. Building is scheduled for next summer.

**Farm Plan.** Peter Handford is working on this. So far his team have been working out appropriate uses for different parts of the farm depending on Land Use Capability analysis. Then that has to be melded with the various miniplans – restoration, recreation, heritage, information etc. And then overall decisions need to be made as to the way forward for the next 10 years. A complex process.

**The Dell.** Visitors will have seen the gradual evolution of an improved access. This has been completed and it will be seeded next weekend so as to get both an

autumn and a spring growing season before it will be sound enough for use next summer. Only just in time as the stream just to the west of the original track is actively eroding towards it. Community Service workers have begun clearing gorse on the north slope of the Dell.



North slope of entrance to Dell



Carex planted 3 years ago in Carex Valley

This area will be planted as it is cleared to get native cover as quickly as possible. Small Carex were planted in the boggy valley bottom last year, into large pieces of carpet. This has been successful in preventing tall grass swamping the plants and the same technique will be used along the waterway at the entrance to the Dell.



Natural regeneration through gorse



Ann gathering carex seeds from an original

**Kapiti Pakeke Lions** have made a generous donation of \$500 for plants. Their members would like to join us at a planting bee, probably mid June. Their plants will be used to complement the work done in the Dell by Kapiti College students last year.

**Ti Kouka plantings.** These have had such a good start with the damp summer, many small manuka and kanuka are now above the grass. Thanks to those volunteers who have been clearing these.

**Nature.** Two weta motels now have weta in residence. Glow worms were seen along Gums Track in the early morning.

**Reminder. AGM this week:7pm Thursday 12<sup>th</sup> April**

Paraparaumu Library meeting room. Agenda attached.

**Other dates to put in the diary:**

**Working Bee Sunday May 6<sup>th</sup>**

**Rugby Legends Planting Saturday May 26<sup>th</sup>**

## Whareroa Supporters' Update 16 May 2012

### Postponement of Rugby Legends Planting to Saturday 11<sup>th</sup> August

Rugby Legends and Project Crimson have postponed this event. Thanks to those of you who'd offered to help setting up - you'll still be needed in August. You may like to check out their site: [www.livinglegends.co.nz](http://www.livinglegends.co.nz) Pre-plant spraying has been done – the pink spots on the hill side.

*There will not be planting on 26<sup>th</sup> May.*

**The next Guardians' event and first 2012 Whareroa Planting will be Sunday 17th June, in the Dell.** Members of the Kapiti Pateke Lions will join us. BBQ hotdogs afterwards as well as morning tea!.

The emphasis of this year's plantings will be on consolidation – filling in gaps and extending the range of plants in earlier planting sites, ie “secondary planting”, including trees which need shelter such as kohekohe, tawa and miro.

**Whareroa Guardians Community Trust Officers for 2012/13.** At the last meeting of the trust the following were elected: Chairperson - Rachel Kiel-Taylor, Treasurer - Michael Keith, Secretary - Ann Evans and to a new position, Deputy Chair - Liffet Stewart.

**Working Bee 6 May 2012.** Some great gorse clearing was done on a beautiful day in the Dell. This was to remove flowering gorse and thus seed sources from above the already cleared southern slope and to provide space for native planting around the perimeter of the Dell to connect to Kamahi Bush. The floor of Kamahi Bush is covered with small seedlings including nikau. Theo & Alex also cleared old tyres from the Marines' Recreation Hall site, adjacent to the farm race, tidying up before the upcoming celebrations.



*Many thanks to: Dawn Bush, Ruby & Kieran Durrant-Bush, Peter Kentish, Tony & Helen Griffiths, Don & Mary Beggs, Ian & Penny Redward, Fred & June Rowland, Liffet Stewart, Jan Nisbet, Jean McCallan, Bill Jansen, Theo & Alex Barsanti and Ann Evans.*



Peter



Ian



Liffet raking and the end result: gorse cleared along fence line above the Dell and wires removed

**Marines' 70<sup>th</sup> celebrations.** A reminder that all are welcome to join in these. See the [www.marinenz.com](http://www.marinenz.com) website for more information. The main event is a ceremony at QE Park on Monday morning May 28<sup>th</sup>. If any supporters are free to assist with this eg ushering and helping visitors, please can they phone John Porter at 905 8210. Another event will be a re-enactment of the Marine's training route on June 10<sup>th</sup> (information was distributed with the last update). Look out for a new Marines' information display in the entrance bay, coming soon (compiled by John Porter and Anthony Dreaver).

**Pests.** Goats and possum numbers are being reduced.

**Dell path.** This has been finished and grass sown, it will be ready for use next summer. Many thanks to Bernard Cammack. Work to flatten a small area for a couple of picnic tables at the bottom of the amphitheatre has been approved by DOC and will start soon. This can then also double up as a small stage for use at picnics.



Horses making good use of their access

**Farm Plan** – the draft is due out this month. This will be distributed and a public meeting for consultation called. We hope lots of supporters will be able to attend this important meeting as it will determine the future direction of Whareroa, details to come.

*From the Whareroa Guardians: Rachel Kiel-Taylor, Liffet Stewart, Michael Keith, Ann Evans, Carol Reihana, Jenny Rowan, John Lancashire, Bob Zuur, Sue Blaikie and Theo Barsanti.*



## Whareroa Update 20 June 2012

### Whareroa Plan

Many thanks to the 30 people who braved a horrible winter night to hear Peter Handford's presentation. Lots of constructive feedback was given which will be considered. There are 2 components to the plan: the long term vision and a 10 year action plan (which must not block off future options). A summary of the presentation is attached and we invite your comments by this Saturday, 23rd by email. Thanks to those who have already sent written feedback.

### Planting, June 17th

We had an excellent session with a very enthusiastic group. We were joined by several Kapiti Pakeke Lions who had donated \$500 for trees, as part of an international Lions project which has planted 9 million trees worldwide in the last year. We were also pleased to see some other new planters. We planted approx:  
100 carex secta  
100 mahoe  
100 coprosma propinqua  
100 coprosma repens  
50 Pittosporum tenuifolium  
and small numbers of totara, rimu, pukatea, kaikomako, rewarewa, titoki, kohekohe, kowhai and five finger. These were planted in the Dell and to extend edge protection along Matai Bush. (The visible bare trunks indicate stressed bush after years of grazing.)



The group



Ruby delivering carpet squares

Plants were "carpeted" (thanks Julie for the huge pile) and smaller ones marked with bamboo sticks (thanks Penny and Ian). The session was ready to roll after Peter, Ann, Liffet and Sue had beavered away the day before, weedeating spots and carrying plants. Ian's 4WD was invaluable.

**Many thanks to:** Noel Foote, Beryl Rickard, Jim Hall, Tom Houston, Fred & Kathleen Borrett, Colleen & Graham Hooper, Pat Eyles, Roger & Mavis Smith, Laura, Cory & Bill van Peer, Liffet Stewart, June & Fred Rowland, Dawn Bush,

*Ruby Durrant-Bush, Tony & Helen Griffiths, Dick Caldwell, Steve Bollam, Bruce & Jill Bulmer, Peter & Denise Davis, Robyn & Matthew Hayward, Julie Lines, Dave Allen, Sue Blaikie, Penny & Ian Redward, Jan Nisbet, Bernard Cammack & Ann Evans.*



*Sue and Liffet delivering plants*



*Planting at entrance to Dell*



*Edge protection planting north of Matai Bush*



*Checking out previous year's protection planting*

### **Community Activity**

The Kapiti Harriers ran a very successful event with 140 runners and walkers doing a 13km circuit retracing the steps of the US Marines as part of Salute70. Tramping and walking groups from the wider region are discovering Whareroa as are lots of mountain bikers and families.

### **Birds at Whareroa**

32 species have been recorded by Helen Griffiths during her regular monitoring.

**Future Planting Dates: Sundays July 1<sup>st</sup> and 22<sup>nd</sup>.**

**Rugby Legends (2,500 plants) Planting: Saturday August 11<sup>th</sup>**



An introduction to..

## **Sustainable Land Management Plan for Whareroa Farm**

A draft sustainable land management plan for Whareroa Farm is currently being prepared by PA Handford & Associates Ltd. This project is being undertaken for the Department of Conservation and the Whareroa Guardians.

### **What is this project?**

Whareroa Farm is an important area of public land that has a wide range of key resources is highly valued by the local community and is also important to Iwi. The farm is managed by the Department of Conservation and the Whareroa Guardians Community Trust. A range of plans have been prepared for aspects of the farms management. This project is integrating these plans together. Importantly it will:

- Provide sustainable land use planning for the currently grazed areas and at coarser scale across the entire Whareroa Farm.
- Integrate existing plans for activities such as recreation and restoration, with sustainable land use planning to provide a 10 year plan for Whareroa Farm.

The project aims to ensure that management of Whareroa Farm is set up on a sustainable basis with activities and use well matched to underlying land capability. This will help protect and enhance key resources such as soils, biodiversity, water and landscape. It will provide a basis for ensuring long term recreational value. It will also allow practical planning of year to year work programmes across the farm covering aspects such as fencing, grazing management, restoration and planting.

### **Process of preparing plan**

The following process is being used to prepare the plan.

- Collating existing information
- Mapping of key farm resources, including soils, land use capability, biodiversity, landscape etc
- Identification of potential management zones. These are areas of land with similar resources and potential for a similar range of uses
- Identification of broad management direction in relation to management zones
- Integrating existing plans with sustainable land management information to develop a 10 year plan
- Preparation of a draft sustainable land management plan, including 10 year action plan
- Discussion and feedback on plan

### **Final Plan Whareroa Farm land management zones**

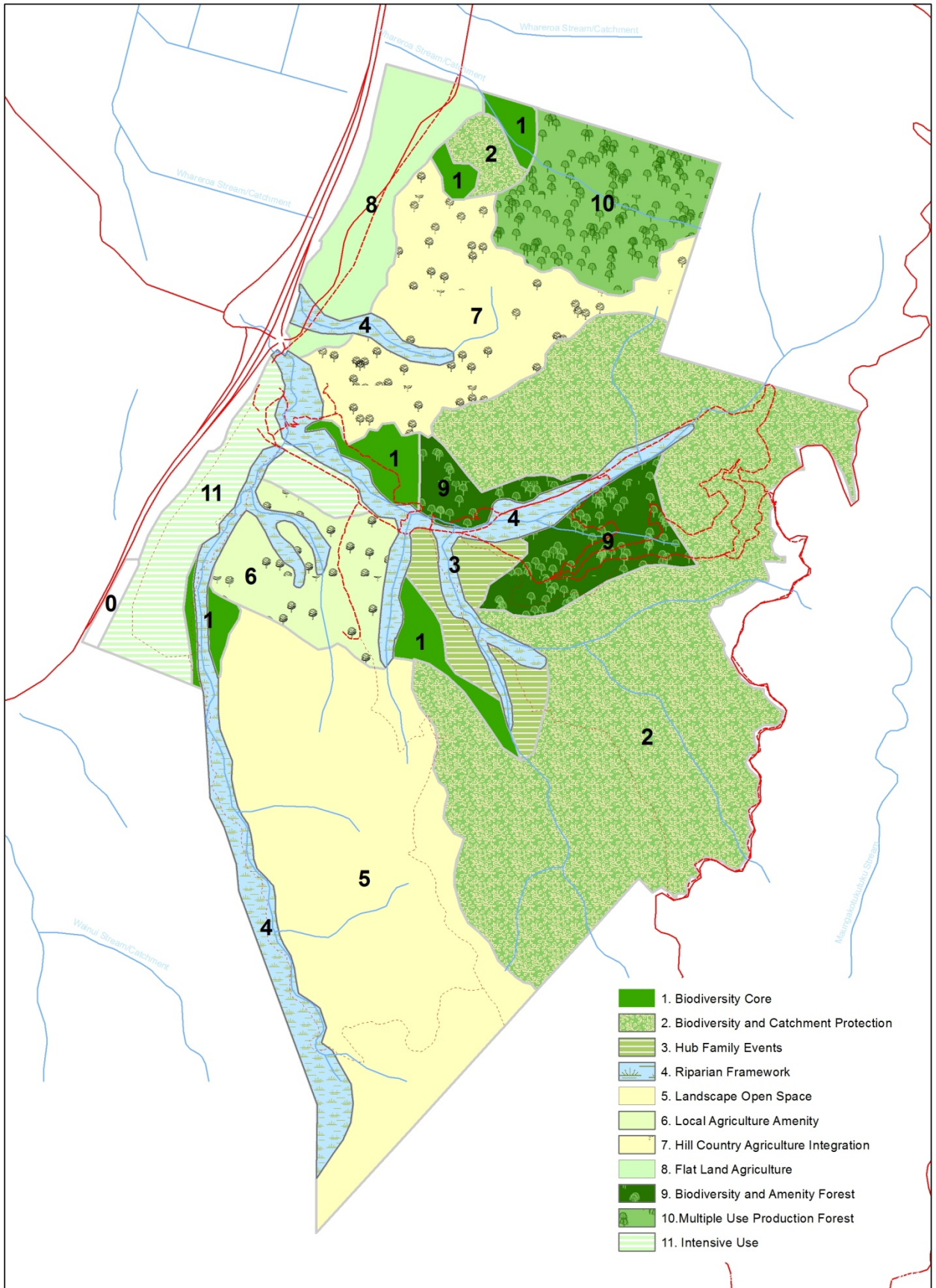
Land management zones are areas that best suit certain activities by virtue of a combination of their land use capability and their environmental and cultural resources.

Analysis of the Farm's natural resources was used to identify logical groupings from the perspective of use, management and ecology. These logical groupings are designed to also be consistent with the vision and goals of managing Whareroa Farm.. Land management zones provide for management decisions that are consistent with the best long-term pattern of land use across the

Farm. Eleven land management zones are identified for Whareroa Farm. A map of the land management zones is provided in Appendix 17. Summary descriptions of each zone are provided in the table below.

<b>Zone</b>	<b>Location</b>	<b>Features</b>	<b>Best use / development</b>
<b>1. Biodiversity core</b>	<ul style="list-style-type: none"> <li>• Areas of lowland forest remnant</li> <li>• Includes covenanted areas.</li> </ul>	<ul style="list-style-type: none"> <li>• Some small areas of remnant, lowland forest, now rare across district.</li> <li>• High biodiversity values</li> <li>• Stock excluded</li> <li>• Possums controlled in covenants</li> <li>• Some regeneration in surrounding areas providing buffering</li> <li>• Some have good access and connectivity, others lacking</li> </ul>	<ul style="list-style-type: none"> <li>• Enhancement through trapping, buffering and weed management</li> <li>• Important seed source and habitat for native fauna</li> <li>• Increase connectivity with riparian zone and other high value areas</li> <li>• Potential to increase public access for recreational, educational and ecological reasons</li> </ul>
<b>2. Biodiversity &amp; catchment protection</b>	<ul style="list-style-type: none"> <li>• The steep faces in catchment heads along the eastern boundary of the Farm</li> <li>• Spurs extend down into the central portion of the Farm</li> </ul>	<ul style="list-style-type: none"> <li>• Less productive steep slopes</li> <li>• Includes important regenerating native forest and scrub.</li> <li>• Important catchment protection function for the Whareroa Stream</li> <li>• Important recreational links with Campbell Mill Road</li> <li>• Important biodiversity connections through to adjacent properties</li> </ul>	<ul style="list-style-type: none"> <li>• Allow native vegetation to regenerate</li> <li>• Ongoing recreational track development</li> <li>• Supports the restoration efforts on the lower reaches of the Whareroa Stream</li> <li>• Establish pest control along boundary</li> </ul>
<b>3. Hub – Family events</b>	<ul style="list-style-type: none"> <li>• Central area around the confluence of the MacKay's and Ti Kouka tributaries and "The Dell"</li> <li>• Low lying areas in the valley bottom</li> </ul>	<ul style="list-style-type: none"> <li>• LUC: Productive flats and terraces</li> <li>• Low lying open pasture with areas of regeneration, exotic stands and forest remnants</li> <li>• landscape values of open space and view-shafts up the valleys and out to the coast</li> <li>• Sheltered from wind and highway noise</li> <li>• Easy access on foot/bike for families and groups</li> <li>• Natural amphitheatre</li> <li>• Areas of restoration activity</li> </ul>	<ul style="list-style-type: none"> <li>• Focus on recreational access and amenity</li> <li>• Restoration planting of riparian areas and adjacent steep slopes to manage gorse spread</li> <li>• Maintain open space and landscape values. Potentially use stock to keep grass down</li> </ul>
<b>4. Waterway framework</b>	<ul style="list-style-type: none"> <li>• Covers the lower sections of the main Whareroa tributaries</li> <li>• Western and central regions of the Farm</li> </ul>	<ul style="list-style-type: none"> <li>• Key tributaries contributing to health of the Whareroa Stream</li> <li>• Wetland and wet seeps recommended for fencing and restoration</li> <li>• Large areas have been fenced and planted and/or are in managed regeneration</li> <li>• Some areas are currently grazed with stock access to stream.</li> <li>• Culverts in lower part of the Farm. Some unsuitable for fish passage</li> </ul>	<ul style="list-style-type: none"> <li>• Restoration and riparian planting</li> <li>• Catchment management to reduce sedimentation and stock effects on water quality</li> <li>• Integrated and consistent approach across zones to achieve aquatic health outcomes.</li> <li>• Ensure all fish passage OK and is maintained this way. Enhanced links to QEP.</li> </ul>
<b>5. Landscape open space</b>	<ul style="list-style-type: none"> <li>• Prominent grazed ridge running south east toward the horizon</li> <li>• A core part of the</li> </ul>	<ul style="list-style-type: none"> <li>• LUC: less productive steep slopes</li> <li>• Important landscape values</li> <li>• A large component of the agricultural lease</li> <li>• Important views from recreational</li> </ul>	<ul style="list-style-type: none"> <li>• Maintain as open grazed land</li> <li>• Recreational access to view platforms and back of the Farm</li> <li>• Keep free of visible infrastructure</li> </ul>

Zone	Location	Features	Best use / development
	agricultural lease	tracks	
<b>6. Local agriculture amenity</b>	<ul style="list-style-type: none"> <li>Lower elevation pasture within the agricultural lease</li> <li>Multiple paddocks</li> </ul>	<ul style="list-style-type: none"> <li>LUC: productive ridges and easy slopes and productive flats</li> <li>Grass production over summer reasonable</li> <li>Remnant wetlands</li> <li>Excellent low level view platforms out toward coast</li> <li>Relatively accessible easy walking terrain</li> </ul>	<ul style="list-style-type: none"> <li>Maintain open grazing</li> <li>Integrate individual and small group tree planting for shade and shelter.</li> <li>Fence and restore wetlands</li> <li>Opportunity for farm-education experience</li> <li>Develop recreational walking loop</li> </ul>
<b>7. Hill country integrated agriculture</b>	<ul style="list-style-type: none"> <li>Moderate faces and ridges in northern area of farm</li> </ul>	<ul style="list-style-type: none"> <li>Productive ridges and easy slopes with Paremata hill soils</li> <li>Some slipping of deeper soils on sides of ridges</li> <li>Considerable wind exposure to west</li> </ul>	<ul style="list-style-type: none"> <li>Maintain open grazing</li> <li>Integrate Individual trees and groups of trees for shelter and land stabilisation</li> <li>Potential for development of recreational loop tracks for mountain biking and walking</li> </ul>
<b>8. Flat land agriculture</b>	<ul style="list-style-type: none"> <li>Low lying terraces in the north western sector of the Farm</li> <li>Part of agricultural lease</li> </ul>	<ul style="list-style-type: none"> <li>LUC: productive flats and terraces</li> <li>Severed by the north bound access road</li> <li>Remnant wetland area adjacent to the highway</li> <li>Protected urupa and historic cultivation site</li> <li></li> </ul>	<ul style="list-style-type: none"> <li>Maintain grazing</li> <li>Control gorse for fire prevention, recreational access and agriculture</li> <li>Riparian planting up tributary in the southern end of the zone</li> <li>Potential accessway for forestry production in northern part of Farm</li> </ul>
<b>9. Biodiversity amenity forest</b>	<ul style="list-style-type: none"> <li>North orientated face up MacKay's tributary</li> <li>Location is site of the main access tracks into the back of the Farm</li> </ul>	<ul style="list-style-type: none"> <li>LUC: Productive ridge with easy slopes over considerable portion.</li> <li>Partly sheltered from prevailing winds</li> <li>Key recreational access area</li> <li>Fire risk due to gorse, public access and prevailing wind direction</li> <li>Incorporates eucalypt timber block</li> </ul>	<ul style="list-style-type: none"> <li>Maintain recreational track network</li> <li>Potential for more active planting for gorse management and improving amenity</li> <li>Reduce fire risk to users and encourage natural regeneration along the northern and eastern boundary.</li> </ul>
<b>10. Multiple use production forest</b>	<ul style="list-style-type: none"> <li>North and west facing slopes in the steep northern corner of the farm</li> </ul>	<ul style="list-style-type: none"> <li>LUC: includes less productive steep slopes</li> <li>Currently retired and with patchy gorse and pasture.</li> <li>Relatively low landscape, agricultural and recreational values</li> <li>Partly sheltered from prevailing winds</li> <li>Adjacent to neighbouring exotic forest stands</li> </ul>	<ul style="list-style-type: none"> <li>Focus on production forestry and carbon capture</li> <li>Provide additional setting for recreational use</li> <li>Contribute to restoration of Mackay's tributary</li> <li>Reduce fire risk by removing gorse</li> </ul>
<b>11. Intensive use</b>	<ul style="list-style-type: none"> <li>Land that previously housed the marine camp</li> <li>Includes the south western frontage (air strip) and levelled paddock in the central valley</li> </ul>	<ul style="list-style-type: none"> <li>Adjacent to State Highway 1 and easily accessed by foot and vehicle</li> <li>Modified land that has been levelled, and potentially gravelled, for housing purposes</li> <li>Historically significant area</li> <li>Lower land use capability due to shallow soil depth. Dries out easily</li> </ul>	<ul style="list-style-type: none"> <li>Potential for a range of intensive uses such as recreation: events, parking, camping</li> <li>Potential for intensive farm use such as viticulture</li> <li>Strong link to historical encampment so need to integrate recreational, historic and farming values</li> </ul>



1:10,000  
Date: 12/06/2012

### Whareroa Farm - Management Zones

0 125 250 500 Meters

## Whareroa Update 19 July 2012

Hello Everyone

**Planting is this Sunday, 22<sup>nd</sup> July 9 to noon.**

We will be doing various “bits” including giving planters some bigger trees eg kohekohe to go and find good positions in amongst the established initial plantings. This is “secondary” planting with plants which need protection.

There is also more planting to do in the Dell and possibly along the Ti Kouka Stream and past Matai Bush, depending upon how the morning pans out.

**The last planting bee on 1<sup>st</sup> July** completed initial protection along the northern edge of Matai Bush using *Coprosma propinqua*. The bare trunks indicate wind damage. Infill planting along the Ti Kouka Stream to further the World Wildlife Fund project was done, as well as planting swamp maire by Matai Bush. Sue, Liffet and Bill had a prickly, muddy time clearing blackberry. Theo, Paul, John, Joe and Louise risked life and limb getting right into the middle of the dead gorse. Those plants will have lots of nitrogen and shelter to get a good start.



**Many thanks to:** Mary Beggs, Jean McCallan, Robyn Hayward, Ian Redward, Dawn Bush, Kieran & Ruby Durrant-Bush, Rosie, Theo & Alex Barsanti, Dick Caldwell, Sue Blaikie, Bill Jansen, Peter Kentish, Liffet Stewart, Ann Evans, Fred & June & John Rowland, Paul Callister, Tony Griffiths, Joe Clarkson and Louise, and Laura van Peer. Chris & Max Wootton & Alexander McManus possumed. It is great to have Laura and June nourishing us with morning tea and lunch BBQ ; hot dogs have been particularly tasty this year thanks to Laura’s feijoa chutney and onions. And thanks to those volunteers who go in regularly at other times to clear plants, cut gorse and grub thistles.



Planting Ti Kouka amongst dead gorse



John and Theo getting right into it



Robyn and Jean planting nikau by Bush Walk



Kieran learning how to plant with Peter

**Activity on the Farm.** Lots has been happening on the farm. The Community Workers planted about 200 trees on the northern slope of the Dell. A ditch to prevent erosion of the race descending to the gums, with a culvert at the bottom, is under way, along with improvement to drainage on the “Horse Track”. Thanks DOC. Possums are being culled in good numbers by Chris Wootton. The major capital investment by DOC this year is the new septic tank system being installed at the entrance, with a soak away system into the paddock.

**A reminder to horse riders** that at present they should only use the “Horse Track” at the far end of Carex Valley for both up and down movement to Campbell’s Mill Rd. They should not use the new Link Track or the steep “Downhill Track”. Hoof marks and skids on those tracks have appeared and in these wet conditions significant track damage will occur. We hope that in the next year a full circuit will be provided for horses (and trampers), using the East Ridge (just south of the current “Downhill Track”); volunteers have been doing preparatory gorse clearing and working out the route for this.

**Grazed Part of Farm Closed.** All grazed sections of the farm are closed for lambing/calving until 30 September. This includes the “Cairn View Track”.

**Bird monitoring -** this has occurred regularly for the last year, thanks to Helen Griffiths. 35 birds have now been recorded: Bellbird, Blackback gull, Blackbird, Chaffinch, Dunnock, Eastern rosella, Falcon, Fantail, Feral pigeon, Goldfinch, Greenfinch, Grey warbler, Harrier hawk, House sparrow, Kereru, Kingfisher, Little (?black) shag, Magpie, Mallard, Morepork, Paradise shellduck, Pheasant, Pukeko, Redpoll, Silvereeye, Shining cuckoo, Skylark, Spurwinged plover, Starling, Sulphur crested cockatoo, Swallow, Thrush, Tui, White faced heron and Yellow hammer. If

you see another species, please let us know. Also, if anyone sees the shags again, close up, can they let us know what colour beaks they have to clarify the species.

**Marine's visit** – one of the 1942 Marines recently visited the farm with his girlfriend from Paekakariki from that time and they each had their children with them. His daughter from the US showed us photos of the camp in the main valley taken from the top of the hill by the entrance. We hope to get copies for the archives. John Porter and Anthony Dreaver showed them around and gathered interesting memories.



Younger volunteers Ruby, Rosie & Kieran



Work on new sewage system for entrance toilets

### **Rugby Legends Planting Sat 11<sup>th</sup> August. 2,500 trees to go in !!!**

Schools will be planting on the 10<sup>th</sup>. If you can help on the Thurs/Fri please contact Amy Brasch at DOC [abrasch@doc.govt.nz](mailto:abrasch@doc.govt.nz) Phone 04 470 8409 or M: 022 074 2317 (thanks to those of you who offered last time before it was postponed, please let me know if you can still help).

The Rugby Legends organisers would like volunteers to sign up for this on their website, for catering purposes; to register visit the webpage and click on "register for this event" button: <http://www.livinglegends.co.nz/horowhenua-kapiti-planting/>





## Whareroa. Update for Supporters 30 Aug 2012

Hello Everyone. Sorry this is short notice but had computer glitches. We're back to usual 1st Sunday of the month working bees now.

Well, what a great day for the **Rugby Legends planting**. About 80 volunteers along with lots of little kids carried plants up the hill and ventured onto steep slopes to plant almost 2,500 plants (including those planted the day before by Paraparaumu Beach school kids). It was sunny and bright and after a hard morning hot dogs were ready for us, prepared by the Paraparaumu Rugby Club juniors along with hot drinks, chippies and muffins. There are a few flaxes left and we'll do those on Sunday. There is funding for one more year and that will extend planting up to the Kapiti Lookout and join to the original bush. KCDC recently donated toetoe and kowhai which we will plant on the bank this next working bee on Sunday.

Many thanks to all who were involved.



Carrying up plants



Planters on the bank



Planters en masse

Volunteers have been busy. Liffet and Dick have weed eaten accesses through the original 2007/08 plantings by the main race. Do go and check them out and feel

free to cut any flowering gorse, it's good to get it before it seeds. Some trees could still do with releasing from the enveloping grass, especially the kahikatea. We will do some more "infill" planting with titoki and kowhai.

Dave and Peter are tackling blackberry – the worst job for volunteers. Dave did along the main race and Peter up by the pines by Ti Kouka Stream. Jan, Liffet, Ann and Sue continue their early morning thistle attacks.



Youth



Experience

Ann did a botanical survey of regeneration at the heads of the valleys where the mountain bike track is proposed to go. Lots of interesting things are popping up: nikau, tawa, a rimu, lancewoods, olearia, clematis, tree ferns, rewarewa as well as the usual bush regen plants: mahoe, coprosmas, pepper trees, pittos etc. It's all been brought in by birds and wind and demonstrates how lucky Whareroa is to have good seed sources on site.

A group of mountain bikers installed two "Gibson Grates" across the fence gaps in the upper Link Track – lots of digging. No more gates to open or risk of cattle getting in.

Others we know of who work regularly at Whareroa are Don and Mary Beggs and Tony and Helen Griffiths. Helen has offered to continue the bird monitoring for another year – that's great. The falcon was seen cruising last weekend. We wonder if they may nest in the gums.

If you're helping the regeneration on Whareroa, we'd love to know!



The Paekakariki steam train going past planters' cars



A geocache record hidden at Whareroa

There's lots that can be done to help plant establishment – especially clearing long grass away from the base of the plants so that they are not smothered – last year's plants along Ti Kouka Stream are already having to compete with this year's grass which is growing vigorously. Also cutting any gorse in the planting areas is appreciated.

Again, thanks to everyone contributing to Whareroa: volunteers and DOC staff.

**Geocaches** – several are apparently hidden on Whareroa. Great to see yet another recreational group using the reserve. Geocaching can be googled for more info.

**Whareroa Farm Plan.** A 2<sup>nd</sup> draft has emerged and is being closely studied.

**Further development:** A "containment toilet" is soon going to be put in at the Hub as most users are based at or beyond there.

**Forthcoming dates:**

**Sunday Sept 2<sup>nd</sup> 9-noon. Working Bee.** More entrance bank and infill planting (KCDC donated plants). Also releasing for those who prefer that. Bring grubbers, spades, hand saws if you want to cut some gorse in plantings. Wear strong footwear. Hope to see you then.

**Sundays Oct 7<sup>th</sup> and Nov 4<sup>th</sup> 9-noon. Working Bees.** More info to follow.

**Wednesday Oct 10<sup>th</sup>** Mental Health Awareness Week. Lunchtime picnic, BBQ and planting (carex in Dell wetland). All welcome.



## Whareroa Supporters' Update 4 October 2012

Hello Everyone.

A reminder that another working bee is happening this Sunday, October 7th, the forecast is good. There are still a few trees to pop into moist areas and we will "release" last years WWF plantings by the Ti Kouka Stream. Please bring shears and grubbers. Follow the flags.

At the last working bee, toetoe, mountain flax and some kowhai were planted on the steep slope above the entrance picnic area – it looks worse than it was as stock had left little ridges around the slope for footholds. Rain soon after planting was appreciated as it is a very exposed site; we do expect some losses but hope sufficient will survive to give an attractive backdrop, as well as stabilising the slope. Ribbonwoods were also planted along stream sides near the Dell and Gums, these have extensive roots which stabilise stream banks. Nice to meet the Hopkirks who planted these, along with Dawn and Dick.



Mountain goat volunteers



Bluff above entrance picnic area

**Many thanks to:** Carol & Ray Molineux, Bill Jansen, Dick Caldwell, Dawn Bush, Dave Allen, Jan Nisbet, Ann Evans, Sue Blaikie, Michelle Hopkirk and son, Tony Griffiths and of course to June and Fred Rowland for morning tea. Liffet Stewart did some later.



Bluff and slip above Whareroa Stream



Dawn & Richard planting ribbonwoods by Dell

**Kapiti Mountain Bike Club Track development.** The Club is surveying the route for a new downhill track. There is extensive “paperwork” needed for an Assessment of Environmental Effects prior to work beginning. The route will start from the top of the Link track and go south, then east, coming out past the Marines’ water intake and back to the Hub. The upper part will pass through regenerating bush. It is exciting to see how much is already growing, the clematis was flowering just by the Link Track, and there are some quite large trees: rewarewa, tawa, lancewood and a rimu as well as lots of tree ferns and saplings including nikau. This is a huge project and we are fortunate to have such a committed and enthusiastic group, coordinated by Steve Lewis, prepared to do this work.



Clematis forsterii, Link Track



Thistle attack

**Heritage and Archeological Review of Whareroa.** DOC have completed this, with significant input from Guardians John Porter and Anthony Dreaver.

**Farm Plan** – this is also approaching completion. Many people have had input. Once done, the Guardians will be able to approach funding agencies for grants to continue our work.

It is now six years since restoration planting commenced, it is amazing to see the growth in that time, thanks to the many, many hours of your volunteer input.

Looking forward to seeing some of you on Sunday.

**Future dates:**

**Weds 10<sup>th</sup> October.** midday. There will be a picnic and planting to celebrate Mental Health week. This will be a family day (it is school holidays) and supporters are invited to bring a picnic and come along to the Hub. After lunch about 200 carex will be planted in the Dell wetland (it’s muddy so gumboots needed).

**Working bees:** Sunday 4<sup>th</sup> November and Sunday 2<sup>nd</sup> December. 9 to noon. All welcome.

## Whareroa, for Supporters 27 November 2012

Hello Everyone.

**Farm Plan.** After a long gestation, this full document will be unveiled and signed by Rob Stone for DoC and Rachel Kiel-Taylor for the Guardians, this Sunday, 2<sup>nd</sup> December, at 10am, at the Farm. It has been compiled by Peter Handford Associates with considerable input by DOC staff and Guardians Trustees.

Many of you provided feed back at consultation and we hope the Plan reasonably reflects community aspirations. There are enough possible projects to keep us all happily occupied for the next 50 years, rather than the 10 year life of the Plan. However, when we see how much has been achieved by both volunteers and DoC in the last 7 years, who knows what will happen. The Plan will be a “living” document and priorities will evolve over time.

***Everyone is invited to join in this occasion, refreshments provided.***

**Working Bee** – prior to the event, some volunteers will do thistle grubbing and weeding around the entrance plants. After the celebration, if there is time, we will work by the Ti Kouka culvert. Small gorse bushes and more thistles need removing. Bring loppers or hand saws or grubbers and wear thick gloves. Everyone is welcome to join us if they are free (but even if you can’t stay, we hope you come to the Plan event).

**Last Working Bee** – 4<sup>th</sup> November. Lots of releasing in the Dell and by Matai Bush was done. Maximum grass growth is happening now and this is the most important time to release to avoid swamping small trees. The initial establishment has been good, we hope for regular rain from now on.



**Many thanks to:** Rachel Salive, Peter Kentish, Penny & Ian Redward, David Allen, Shane Cave, Theo Barsanti, Michael Stace, Richard Caldwell, Fred & June Rowland, Liffet Stewart, Dawn Bush, Sue Blaikie, Rachel Tobin, Ruby & Kieran Durrant-Bush.

**Thanks also to volunteers who are active at other times.** The early morning brigade of Liffet, Jan, Penny, Sue, Ann and Denise lop thistles and gorse as well as having fun finding new plants and spying goats. Richard Caldwell has got Leon's mower working and gave it its first run, cutting a path for volunteers to access the Ti Kouka and Matai Bush plantings. Liffet and Shane weed-eated a way through the initial Whareroa Stream plantings and Ann has been weed-eating in the Dell. Bernard has finished excavating a picnic area in the Dell. It will be left in bare earth until autumn, when top soil will be spread and grass sown. Dave and Peter have been doing some blackberry work. It is obvious that others of you are releasing plants and cutting gorse in the plantings, thank you all very much. We are always pleased to hear of your activity to acknowledge it.



Early morning workers Denise & Liffet



Mountain bikers Warren and Richard checking options

**Botany and Birds** – lots of interesting things are happening at the moment. Totara had catkins, hinau and kamahi are in magnificent flower at the top of the Dell, there are green hooded orchids along the Bush Walk and the red stinkhorns were seen at the edge of the Upper Link Track, in the bushy area. Shining cuckoos are noisy and bellbirds, tui and kereru are pairing up.



Stinkhorn fungus, Upper Link Track



Hinau flowering above Dell





First flowering of flax, Matai Bush beyond, ti kouka on skyline

We hope to see many of you this Sunday: 10am, at the Farm.