

# WHAREROA GUARDIANS COMMUNITY TRUST

## Updates for Supporters 2014



Planters, August 2014





# WHAREROA GUARDIANS COMMUNITY TRUST

## Whareroa Update 15 January 2014

A new year and already things are happening.

### Cairn Opening and Picnic

Firstly, the date for the Cairn Opening had to be deferred due to consent issues, all sorted now and it will be on Sat Feb 22nd from 4pm (see flyer). We hope for a good turn out as the Cairn was built to acknowledge all those involved in the saving of Whareroa, the tangata whenua and all who contribute to the development of Whareroa. Please pass the flyer on to anyone who might be interested and invite your friends – there's plenty of room!



After the opening ceremony at 4.30pm there will be activities at the Hub – BBQ's will be set up for visitors to use, live music, children's activities, guided walks, glow-worms might be



shining. Bring your picnic, rug (sheep poos!), insect repellent, warm clothes for later and enjoy a long summer's evening (we hope).

People with disability who would like to attend the ceremony should speak to a Guardian on site (wearing Hi-vis vests) – please allow some extra time but we will have 4WD's available to help those who need a lift up to the site.

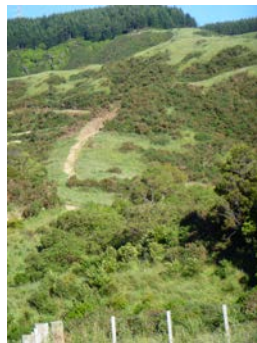
**Working Bee. There will be a working bee on Sunday Feb 2nd. 9am to noon.**

Proposed tasks will be more earthwork and gorse clearing on the East Ridge Track. Bring grubbers, hand saws, spades, and wear good gloves. The route is now open all the way though it still needs some fine tuning – do go and have a look, the views are amazing.

Some may prefer to do releasing – the plants above the quarry face are a bit overshadowed by long grass – there is a supply of carpet squares under a white tarpaulin by the fence line to apply to those which missed out (thanks Bruce for transporting).

All welcome, please bring your own morning tea as we will be too far away to come down.

**Last working bee 8th December at East Ridge Track.** Many thanks to those who braved the showers. Under Ian's supervision a zigzag was dug up a steep section. A similar job is needed at the top where it leaves the Downhill Track. *Many thanks to: Ian & Penny Redward, Phil Ruegg, Dick Caldwell, Bill Jansen, Ann Evans and Peter Kentish.*



### Other work:

Sascha and Theo, with others finished the Cairn – there must be several tons of rocks, each placed by hand. Sascha is also building benches so we can sit and enjoy the setting – evening is particularly nice. Dick Caldwell has been busy mowing access tracks – these are well worth exploring to find secret corners and get into different areas. Ian and Penny Redward, Sue Blaikie, Ann Evans, Jan Nisbet and Dawn Bush have done further work cutting gorse, weed eating and removing fence wires along the East Ridge route. Scott Hill keeps our web presence with Facebook and Nature Space up to date. Trapping by Shane Cave, Shane Williamson and Scott continues, interestingly the possum take has been small, we hope that means the population is low as the regional council has been undertaking intensive possum management in the district. Rachel Salive has been putting together funding applications for plants. Helen Griffiths does the monthly bird count and Tony grubs out thistles. Don and Mary Beggs are often releasing or clearing gorse. Jan Nisbet has also been developing resources for children to experience the farm and show all the interesting nature such as weta, fungi, plants out of place, fish etc. And of course the mountain bikers are advancing their track up the valley. The Trustees are busy with planning and administration and others are contributing in a quiet way, many thanks to all of you.

**Living Legends are granting Whareroa \$2,500 a year for three years** towards planting. This is very good news and will help with the bush restoration – the larger the area of bush the greater its sustainability and biodiversity. Many thanks to the Tindall Foundation.

**Observations.** Last winter's plantings are looking good with the intermittent rain, the picnic tables at the Hub and Dell are being well used. There have been lots of visitors over the summer. This should be a good year for seeds, a "mast year" is predicted and certainly the kahikatea trees are loaded with fruit.



Sitting at new picnic table above Matai Bush



Kahikatea fruit on the tree in photo to left



## Invitations from other groups:

**QE Park** celebrates its 60<sup>th</sup> anniversary this year. On Sat 18<sup>th</sup> January at 11am their new bird watching hide at the wetland will be opened followed by family activities. Everyone welcome.

**Nga Uruora** invite the community to an evening walk on Sunday 26<sup>th</sup> January round their new Kohekohe Loop Track – meet 5pm at St Peter’s Hall, Paekakariki. It takes about an hour and will be followed by a sausage sizzle.

**From the Whareroa Guardians:** Rachel Kiel-Taylor, Michael Keith, Ann Evans, John Lancashire, Jenny Rowan, Carol Reihana, Liffet Stewart, Theo Barsanti, Sue Blaikie and Scott Hill.

### Our contact details:

[Whareroa.guardians@gmail.com](mailto:Whareroa.guardians@gmail.com) for email

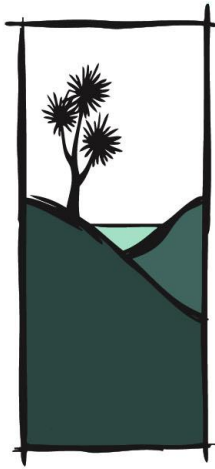
<http://www.naturespace.org.nz/groups/whareroa-guardians-community-trust-inc>

<https://www.facebook.com/WhareroaGuardians>

One can make a donation very easily to the work of the Whareroa Guardians through the following site: <http://www.givealittle.co.nz/org/WhareroaG>

Many thanks to those who have already donated, every bit helps.





# WHAREROA GUARDIANS COMMUNITY TRUST

## Whareroa Update 21 February 2014

**Cairn Opening and Picnic** 4pm to dark, Saturday 22 February.

The Cairn has been built to acknowledge the community effort which prevented Whareroa being sold for private development and the “saving” of the land for us all to protect and enjoy. It was a concept of the late Leon Kiel, designed by architect Hugh Tennent and the building was coordinated by Sascha Wassong with Theo Barsanti and volunteers. Sascha has also built and donated 3 benches at the site. Many thanks to all involved.



## Programme

Gates open at 3.30pm. You will be able to drive into the farm and park nearer the activities. It takes 15-20 minutes to walk up to the Cairn. 4WD transport will be available for those unable to walk up. Guardians will be around to help – wearing badges or Hi-Vis vests.

***NB The front gate must be kept closed at all times in case stock get out. Other gates on the race will be open.***

### **4.30pm. “Unveiling of the Cairn” ceremony**

Jenny Rowan will be “MC”.

Kaumaturua Don Te Maipi will bless the Cairn, followed by short speeches from Rachel Kiel-Taylor (Guardians’ Chairperson) and Matt Barnett (DOC).

The Cairn will be “unveiled” by children followed by a final blessing .

Rachel will lead the singing of the Whareroa Song and then cake and bubbly.

Three totara will be planted just above the Cairn.

We will then head down to the Hub – using the new Ti Kouka path taking people through the Ti Kouka Stream plantings and past Matai Bush.

**At the Hub, about 5.30pm,** Jan Nisbet will have fun activities for children and Penny Redward and Dawn Bush will offer guided walks.

BBQ’s will be available at the Hub and we can enjoy picnicking in a balmy summer evening (we hope). If it is windy we can move into the Dell.

Please bring musical instruments, kites, a rug, torches and warmer clothes in case it cools down.

From about 8.30 to 9pm glow worms are visible at the far end of the Gums Track (stream paddle to access) and more-porks may start calling. If it is a clear night the stars are pretty amazing too.

We hope lots of supporters will be able to come and enjoy the evening. The forecast is a bit iffy but we are optimistic.

### **Last working Bee: Feb 2<sup>nd</sup>. East Ridge Track connection to the Downhill Track**

A sunny morning saw a great effort with grubbers, saws and spades: cutting gorse and excavating earth. Five Ways was a busy place as walkers and mountain bikers passed by and chatted. Don brought his antique “timber jack” and removed several fence posts. The views are great. Signs for this track are to be donated by the Walking Access Commission and the designs are complete. Two horseriders explored the lower section this week and were very enthusiastic about it.

*Many thanks to: Don and Mary Beggs, Tony Griffiths, John and June Rowland, Penny and Ian Redward, Dick Caldwell, Audrey Barber, Ann Evans, Dawn Bush and Kieran Durrant-Bush, Theo Barsanti and Jan Nisbet. (Thanks Jan for the photos)*





**Next working Bee will be on Sunday March 2<sup>nd</sup>** 9 to noon. We will be based at the entrance picnic area. Children (and adults) are invited to a stream paddling time pulling out water weed. Others can release plantings. Morning tea provided. All welcome.

**Ti Kouka Stream Loop Path** Volunteers have cleared a crossing across the upper Ti Kouka Stream to form a short walking loop. Access is by stile from the main race, it goes up the hill, along under the pine trees, crosses the stream and back down past the picnic table by Matai Bush to emerge at a stile into the Hub. Dick Caldwell has mown the path and it is easy walking. It goes through the 2011/12 WWF funded plantings and past the big nikau and gives lovely views. A side branch goes to the edge of Matai Bush where one can peep in and see the regeneration on the forest floor.

**Correction. Living Legends/Project Crimson grant for 2014/16** This grant is \$5,000 pa for three years, not \$2,500 as in the last newsletter. This will give a good start to connecting Matai Bush to Upper Bush to enhance biodiversity – the bigger the forest block the better.

**Seeds.** This year is looking amazing for seeds on ngaio, hinau, nikau, kaikomako, kahikatea as well as toetoe and carex. Unfortunately it has also been amazing for thistles on the farm.

The pest catching team are successfully reducing the numbers of possums, rats, weasels, stoats and mice giving birds, weta and lizards more of a chance.

### **Kapiti Sustainable Garden Show March 22/23 at Kapiti Primary School**

Whareroa Guardians will share a display space with Friends of QE Park. Other local restoration groups will be present and it is inspiring to see what else is happening in the area.

**Kapiti Aeromodellers Club** are holding their annual rally at QE Park, Mackay's Crossing entrance on March 8/9. Visitors are welcome.

**Working Bees are the first Sunday of the month. 9 to noon**

**Whareroa Guardians AGM will be on Tues April 29<sup>th</sup> 7pm at Paraparaumu Library meeting room**

**From the Whareroa Guardians:** Rachel Kiel-Taylor, Michael Keith, Ann Evans, John Lancashire, Jenny Rowan, Carol Reihana, Liffet Stewart, Theo Barsanti, Sue Blaikie and Scott Hill.

**Our contact details:**

[Whareroa.guardians@gmail.com](mailto:Whareroa.guardians@gmail.com) for email

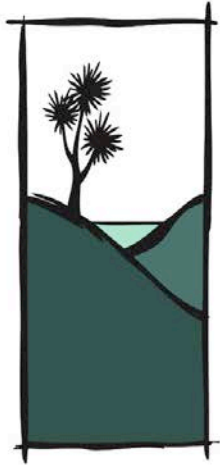
<http://www.naturespace.org.nz/groups/whareroa-guardians-community-trust-inc>

<https://www.facebook.com/WhareroaGuardians>

One can make a donation very easily to the work of the Whareroa Guardians through the following site: <http://www.givealittle.co.nz/org/WhareroaG>

Many thanks to those who have already donated, every bit helps.





# WHAREROA GUARDIANS COMMUNITY TRUST

## Supporters' Update 20 March 2014

**Cairn opening event. 22nd February.** This was a wonderful evening. About 70 supporters gathered to celebrate and acknowledge the “saving” of Whareroa and to remember the many people involved, some of whom are sadly no longer with us. Kaumatua Don Te Maipi blessed the Cairn, children removed the tarpaulin, we processed around the rocks and after speeches from Chair Rachel Kiel-Taylor and Matt Barnett from DOC we sang the Whareroa song. (It’s on “You Tube”, links from Face book and Nature Space). A cake and bubbly and the planting of 4 totara trees ended the formal occasion.



Sascha



Rachel cutting the cake



Matt from DOC





Kaumatua Don Te Maipi & trustee Carol Reihana



A special thanks to Sascha Wassong who coordinated the Cairn building over many months as well as putting up three macrocarpa benches close to it and thanks to all the other volunteers who helped.

Most then migrated down to the Hub, exploring the new loop path along the Ti Kouka Stream past Matai Bush and enjoyed picnics or BBQ. Jan entertained children with weta games after they had built weta motels and then it was into the native forest to fasten the motels to trees. It usually takes a few months for weta to find them but several of the older motels are occupied. Thanks to MENZSHED for providing the kits.



Path crossing upper Ti Kouka Stream



Assembling weta motels



**Next working bee will be Sunday April 6th, 9am to noon.** We hope to complete gorse stump removal on the East Ridge Track, near the Dell. Grubbers and hand saws useful. Others may like to release plants around the Hub toilets or gather seeds from the forest floor. Morning tea at the Hub. All welcome.

**The Trust AGM will be on Tuesday 29<sup>th</sup> April at 7pm** at Paraparaumu Library meeting room. We are delighted that freshwater expert Mike Joy will be our guest speaker. We have 14km of stream at Whareroa and Mike will give a stimulating presentation.

**Trustee elections.** Scott Hill has decided to stand down due to other commitments. He has contributed hugely during his time, particularly in setting up and maintaining our web presence on Nature Space as well as Facebook. If anyone else would like to take this role over, please contact us. Scott will continue doing this until someone else volunteers. He has taken an active role in fundraising and has been one of the three (soon to be four) pest cullers and intends to continue in this role. We will miss you on the board Scott. Other trustees due to stand down having completed their 3 year term are: Michael Keith, Liffet Stewart and Sue Blaikie. They are available to stand again. Please consider whether you or someone you know are interested in standing for a place as trustee. Feel free to contact us if you would like more information.

**The Wellington Community Trust have made a donation of \$6,000** towards our next major planting project – **to join Matai Bush to Upper Bush** and hence create a much healthier block of native forest, visible and accessible from the Hub. The larger the area, the greater the biodiversity and security for native plants and animals. We sincerely thank the Wellington Community Trust for this donation which contributes to one of their goals: “To protect and preserve our heritage and environment”.

In addition a **\$500 donation has been made by the Kapiti Pateke Lions** who made a similar donation two years ago. We also thank them and hope some may join us again in planting. Their earlier plantings of carex by the Dell and shelter along Matai Bush are doing very well.

These donations along with the \$5,000 already received from Living Legends Plus will allow us to make a very good start to this work with nearly 4000 plants funded. The whole project is expected to take 3 years.

**Last working bee on March 2<sup>nd</sup>** was focused on the entrance. Volunteers cleared weeds and cut back some flax hanging over tracks. Water weed was removed to give a clear section of stream for children to paddle in by the picnic area. It's amazing how toughly that weed is rooted. In the long run, when the stream is shaded this weed won't grow, one of the tasks for next planting season is to plant ribbonwood trees along the stream to provide summer shade, as well as more carex. We were pleased to meet again with Gordon and Tineke Hosking from Living Legends. He checked out previous plantings and visited the new site.

**Many thanks to:** June Rowland, Peter Kentish, Rachel Salive, Dawn Bush, Kieran Durrant-Bush, Bill Jansen, Audrey Barber, Ann Evans. Dick Caldwell and friend Henry have been mowing the grass paths. And of course thanks to those who just go in and “do stuff” at random times.



Morning tea with Gordon & Tineke



“Heave ho”. Audrey, Miyako, Kieran & Peter



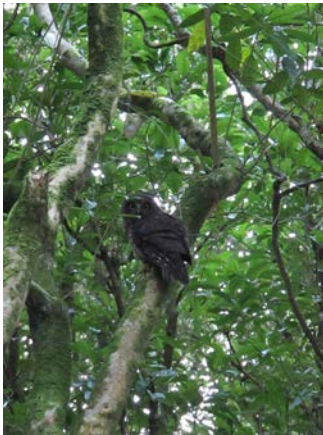
**Planting 2014** will take place on the 1<sup>st</sup> and 3<sup>rd</sup> Sunday mornings of July, August and September. Please put in your diaries! We intend to prespray “holes” to make planting easier. As usual, there will be hotdogs after each session. There will also be a primary schools planting day in August.

**The East Ridge Track** is progressing steadily. Official signs have been ordered, these are funded by Walking Access Commission NZ. DOC is also providing several new signs so we hope there will be no confusion. Don and Mary Beggs are steadily removing fence posts from the route and Ian Redward, Bernard Cammack and Ann Evans spent a day removing gorse – great work, thanks.

**Pests, seeds and a ruru.** Shane, Shane and Scott have now removed over 400 pests, mostly rats and mice but useful numbers of possums, stoats and weasels. This is particularly important as this year is a “mast year” in which certain trees produce huge quantities of seeds. These provide food for birds, but also for mice and rats which leads to an explosion of higher predators who then target native birds. A ruru was seen early



one morning, just sitting on the Upper Link track, it was not frightened and seemed interested in the watchers.



Ruru



Nikau fruit



Gathering kahikatea fruit: Jan & Liffet

**Bird monitoring** is continuing once a month. Helen Griffiths is building up a good data base and over years this will give information about the success of restoration and the impact of pest control.

**“In the Footsteps of the Marines”** run and walk will again be happening on Sunday May 25<sup>th</sup>. This 13.6km route follows the Marines’ training run from Whareroa, up Emerald Glen Rd, up the Maungakotukutuku Rd, along Campbell’s Mill Rd and down through Whareroa to the entrance. 150 people did it last year. More info soon or look at Kapiti Joggers website.

**KCDC Sustainable Home and garden show** is on this weekend, at Kapiti Primary School. We will have a presence in the biodiversity marquee along with other local restoration groups. Jan Nisbet is coordinating a stall for QE Park Friends and it’s well worth a visit to check out what’s happening locally. If you can spare an hour or so to be at our table and chat about Whareroa, please contact Jan: phone 905 4807 or 0273585611 or Email [bikeride@paradise.net.nz](mailto:bikeride@paradise.net.nz).



Water intake to be fenced for child safety



2014 planting to join forest blocks on left



Bikers on Whareroa at sunset

**Our contact details:**

[Whareroa.guardians@gmail.com](mailto:Whareroa.guardians@gmail.com) for email

<http://www.naturespace.org.nz/groups/whareroa-guardians-community-trust-inc>

<https://www.facebook.com/WhareroaGuardians>





# WHAREROA GUARDIANS COMMUNITY TRUST

## Update for Supporters 26 April 2014

**AGM will be Tuesday evening, April 29<sup>th</sup> at 7pm.  
Paraparaumu Library meeting room.**

**Guest Speaker is Mike Joy from Massey University.**

He is an expert on streams and wetlands and freshwater ecology and a committed advocate for their protection and restoration. He is an excellent speaker and will discuss Kapiti waterways. We hope for a good turnout, please bring your friends, all welcome. Agenda attached.

Treasurer Mic will be present for membership joining and renewals. One has to be a paid up member in order to vote.

Sadly, Scott Hill is resigning from the Trust so there is a vacancy. In addition three trustees resign each year in rotation. This year they are Michael Keith, Liffet Stewart and Sue Blaikie, all are available for re-election. Please consider whether you would like to join the trustees. It is very exciting to be involved in planning and decision making for improving Whareroa Farm Reserve. Nominations can be made at the meeting. If there are more than four nominations an election will be held.



Scott and Shane on trapping round



Ryan and Lewis on their first visit



Jan removing pampas at entrance

**Kapiti Mountain Bike Club Open Day Sunday May 11<sup>th</sup>.10.30 to 2.30.** All are invited to see work in progress on the new downhill track. Members of the club will offer guided bike rides. Children's activities and sausage sizzle. Look on their Facebook page for more info about the club.

**Whareroa Guardians next working bee. Sunday May 4<sup>th</sup> 9 to noon.** Releasing plants near Hub and Ti Kouka Stream or working on East Ridge Track. All welcome. Morning tea provided at Hub.

**“In the footsteps of the Marines” run/walk happens again on Sunday 25<sup>th</sup> May at 9am.** This will be the third event re-enacting the standard training run for the US Marines whilst based at Camp Mackay in World War II. It involves a loop of 13.6km, a climb of about 300m and starts and finishes at the Whareroa Farm car park. Contact Kapiti Joggers online to enrol or just turn up early.

**Ramaroa Wetland.** Fencing for Stage 1 of this project has been confirmed by DOC and will happen this autumn. It advances riparian protection a step further and will eventually restore a 4-5ha wetland area between Ramaroa Stream and the reservoir, with access for visitors. Applications to fund plants are being made so as to commence this project this winter.



Looking down on rushes of Ramaroa Wetland, beyond Cairn. Ramaroa Stream 2010 plantings, Wetland joins upper right

**Last working bee April 6<sup>th</sup>.** Some worked on gorse stump clearing on East Ridge Track. Why go to the gym when you can have total body exercise like this for free? All the stumps have now been chainsawed down. The new signs have arrived and should go up in May. Others released last year’s plantings by the Hub and found excellent survival, Don and Mary continued their fence post removal and Bernard worked on the Dell track.

*Many thanks to: Don and Mary Beggs, Dawn Bush and Kieran Durrant-Bush, Marlene James, Bernard and Miyako Cammack, June Rowland, Peter Kentish, Bruce Bulmer, June Rowland and Ann Evans.*



Peter and Sue tackling old man gorse



Bruce on the shovel



Kieran and Miyako in the inkweed

The newest section of Dell path, beyond the picnic area, has now been seeded so the “crossing” is closed until the grass is established, at the end of the year.

**Pests** Jason Bohmer has joined Shane, Shane and Scott in this task. In the last year 7 Stoats, 24 weasels, 92 possums, 182 rats, 172 mice and 21 hedgehogs. Total 498 pests have “bit the dust”.



**Frig.** Do you have an old small frig which could be donated to Whareroa? This would be good for storing organic pest bait (made from rabbits) and milk for working bees.

**Planting dates 2014 1<sup>st</sup> and 3<sup>rd</sup> Sundays of July, August and September. 9 to noon**

Please put in your diaries as we should have over 4,000 plants to put in.



2014 Planting site lower slopes between Matai Bush & Upper Bush. Matai on left, totara on right, W. edge Matai Bush

**Nga Uruora Contracting gang have offered us a free day's work** – Many thanks Steve and the team. We will ask them to pre-spray spots for planting, that will make planting much easier.

**Donation from Kapiti Lions** Many thanks to the Lions for a donation of \$400 to purchase grubbers.

Sadly one of our stalwart volunteers, Fred Rowland, died last week. He and June had been involved from the very first planting day in May 2007, he attended almost all working bees until a few months ago. Our thoughts are with June and the family.



Fred and June planting June 2007, old shed behind (demolished) Planting group at Ti Kouka Stream, 2011

**Our contact details:**

[Whareroa.guardians@gmail.com](mailto:Whareroa.guardians@gmail.com) for email

<http://www.naturespace.org.nz/groups/whareroa-guardians-community-trust-inc>

<https://www.facebook.com/WhareroaGuardians>







Whareroa Farm is a DOC recreation reserve at Mackay's Crossing, Paekakariki between Queen Elizabeth Park and the Akatarawa Forest. It comprises 450 hectares, half of which is in pastoral farming and half is retired for native forest and riparian restoration. The Trust has planted over 36,000 native plants, undertaken significant weed and pest control, built a 25m stone wall and a memorial cairn, developed a picnic area from a gorse invested valley and a new 1.3km tramping and horse riding track as well as smaller paths. Perhaps 4-500 people have planted, including school groups.



Whareroa Stream planting site 2007. Gorse & inkweed



Site in 2012. Stream banks fully protected



Site in 2014. Bush edge filling in



Project for 2014/15. Ramaroa Wetland restoration

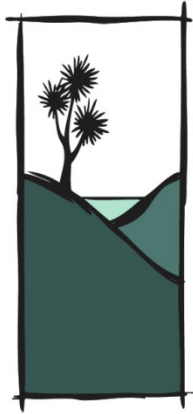
Email: [Whareroa.guardians@gmail.com](mailto:Whareroa.guardians@gmail.com)

<http://www.naturespace.org.nz/groups/whareroa-guardians-community-trust-inc>

<https://www.facebook.com/WhareroaGuardians>







# WHAREROA GUARDIANS COMMUNITY TRUST

## Whareroa Update 22 June 2014

---

### **Our first “official” planting session will be Sunday July 6th, 9am to noon**

The key project for 2014/15 is connecting Matai Bush to Upper Bush thus making a significantly larger block of native forest. The greater the size of a forest block the greater its biosecurity for both plants and animals. The two forest areas are about 250m apart, on the lower slopes of the valley. The Whareroa pest gang have been targeting these areas to optimise conditions. Spots have been sprayed with Roundup to make planting much easier.

We will have about 3,000 plants this year. Plants have been provided by: The Wellington Community Trust, Living Legends Plus (Project Crimson), DOC and the Whareroa Guardians. We thank these organisations.

Volunteers will need to drive in to the Hub and there is then a short walk up to the Water intake (crossing some small streams) where we will be based. The route will be marked by flags from the entrance. Please leave all gates as you find them. Morning tea at the site and BBQ hotdog afterwards will be provided at the Guardians’ shed at the entrance.

Please come and help if you can: wear strong footwear and gloves and bring tools if you have them. We can provide some planting spades and grubbers. Light work is available. Everyone welcome.



Matai Bush centre right, Upper Bush in distance, up the valley. Planting will be on lower slopes.

## Future plantings – Sundays July 20<sup>th</sup>, August 3<sup>rd</sup> and 17<sup>th</sup>, Sept 7<sup>th</sup> and 21<sup>st</sup>.

### Previous Working Bees

#### May 4<sup>th</sup>

The group split into two with one heading up East Ridge to put up the new signs and the other worked hard releasing last year's plantings around the Hub toilets and Ti Kouka. A great morning's work. **Many thanks to:** Peter Kentish, Decclan Evans, Dick Caldwell, Ian & Penny Redward, Tony Griffiths, Liffet Stewart, Marie Louise, Victoria & Rhianna Riley, Jan Nisbet, Dawn Bush, Ruby & Kieran Durrant-Bush, Nancy Davis, June, John & Sandra Rowland, Sue Blaikie, Bernard Cammack, Don Beggs, Marlene James, Dan Touhy (DOC), Theo Barsanti and Ann Evans.



Part of the group after morning tea



Flaxes released by the Hub toilets

#### June 1<sup>st</sup>

Sunday, June 1st started with a touch of frost then became sunny & clear. A tremendous amount of planting was achieved and nearly all the plants (which were donated by Kapiti Rotary) found gaps to fill along the Ti Kouka Stream. Don Beggs in particular got in the swing of digging holes and at one point had 3 people following him trying to keep up! There wasn't time for a walk. **Many thanks to:** Don & Mary Beggs, Tony & Helen Griffiths, Dick Caldwell, Decclan Evans, Peter Kentish, Dawn Bush & Kieran Durrant-Bush, Liffet Stewart, Sue Blaikie, Bernard Cammack, June & Sandra Rowland.





**Kapiti MTB Open Day, May 11th.** This was a very positive event with about 120 visitors. Children loved the skills area set up at the Hub and visitors were taken to the new downhill track site beyond the Marines’ water intake. Donations of digger use and \$5000 has kick-started the forming of the track (to date the work has been surveying and clearing the line). As biker numbers build up it is increasingly important to have separation of uphill and downhill traffic. If you are interested in following their progress, or helping, go to the Kapiti MTB website.



Youngsters enjoying developing their bike skills

**East Ridge Track.** The new signs have been erected. This track is for horses and trampers (and runners) only and will help reduce congestion on the Link Track. There is still some fine tuning to be done: a short section needs “benching”, more fence wires need removal and blue marker poles are to be erected but it is now usable. We appreciate the donation from the Walking Access Commission which paid for the signs and marker poles. DOC also funded new signs for their tracks so as to clarify the network especially at “Five Ways”. Thank you to both WAC and DOC.



Ann & Dan by one of the new signs



Ian, John, Theo & Dan in action



Jan by “zig-zag” planting

The 300m “Connector Track” between Five-Ways and Campbell’s Mill Rd carries trampers, runners, horses and mountain bikes so please can all users be aware of others. Planting between the tracks has started to give visual separation.



## **The Whareroa Guardian's Community Trust AGM was held in April.**

Rachel Kiel-Taylor resigned as Chairperson. Rachel was one of the initiator of the Save Whareroa campaign and has made a huge contribution. Her last chairperson's report is attached; this summarises the year. Scott Hill resigned as a trustee, his place was taken by Sascha Wassong. Sascha has already made a significant impact by coordinating the building of the entrance wall and the Cairn. Welcome Sascha. Fortunately Scott will continue as a very active volunteer from afar, looking after our web presence and continuing his pest control work when in NZ. Thanks Scott.

**Trustees from April 2014 are:** Liffet Stewart (Chair), Theo Barsanti and Sue Blaikie (Deputy Chairs), Mic Keith (Treasurer), Ann Evans (Secretary and newsletter editor), Rachel Kiel-Taylor, Jenny Rowan, John Lancashire, Sascha Wassong and Carol Reihana (iwi trustee).

After the AGM, Mike Joy from Massey University gave a fascinating talk about fish life in the Whareroa Stream. This includes gigantic eels and a number of galaxids. Our stream is very special as there is no housing along it and his information reinforced our commitment to protect the whole waterway from stock, especially cattle, as soon as possible. Many thanks Mike.

## **Whareroa Volunteer Hours 2013**

**Number of volunteers: 10 trustees, 82 other volunteers plus 120 school children planting**

About 3,000 trees and grasses planted above entrance, at Hub, Ti Kouka Stream and Matai Bush

East Ridge Track developed. Cairn Built. Dell path and picnic area developed.

Planting Sessions: 7 events, 632 hours. Nursery work 40 hours

Regular working Bees: 9 events, 688 hours. Cairn working bees 105+ hours

Other activities as mentioned in the Chair's report as well as admin. hours.

**Total recorded hours: 3925. "Value" at \$20 per hour: \$76,610.00**

**Unrecorded work:** Many volunteers also visit the farm and carry out additional activities.

*This list of volunteer input is thus a significant underestimate.*

## **"In the footsteps of the Marines".**

Another very successful run/walk was held by the Kapiti Joggers on May 25<sup>th</sup>. 162 people raced 13.4km, including a 300m climb, following the US Marines' training route in World War II. With a 10 year concession from DOC this is set to become a regular event in the Kapiti sporting calendar.

**Our contact details:**

[Whareroa.guardians@gmail.com](mailto:Whareroa.guardians@gmail.com) for email

<http://www.naturespace.org.nz/groups/whareroa-guardians-community-trust-inc>

<https://www.facebook.com/WhareroaGuardians>

# Whareroa Guardians Community Trust. Annual Report from the Chair

Year: May 2013-April 2014

*Prepared by Rachel Kiel-Taylor*

This year again I have been a somewhat hands-off Chair due to study commitments and the barrier of distance, having now settled in Wellington. A big thank you to Ann Evans who has carried the development project of Whareroa Farm for the community and without her passion and energy many of the projects mentioned here could not have happened.

## **Projects and Events in the Past Year**

Architect Hugh Tennent designed a cairn that has been built by Sascha Wassong (who also coordinated the project) and Theo Barsanti and his landrover, supported by volunteers. The Cairn project was an idea hatched by Leon Kiel around the time that the Farm was saved from development. The purpose of the cairn was to be a permanent commemoration of those who saved the land from private development, those who contributed to its development and those will contribute in the future. A public unveiling was held on the 22nd February, 2014, and the Cairn was blessed by Don Te Maipi and Carol Reihana, followed by a picnic and barbecue at the Hub.

There have been many other projects undertaken this year. Approximately 3,000 plants were planted by volunteers over six days at the following locations: Ti Kouka; by the new toilets at the Hub; The Dell; the edge of the Matai Bush; and above the entrance quarry. Working bees have continued on the 1<sup>st</sup> Sunday of the month and are attracting regular volunteers. A connecting path has been built by volunteers so people can walk among the Ti Kouka plantings and a track to the picnic area at the Dell has been completed, built by volunteer, Bernard Cammack. The Mountain Bike Track is proceeding and there will be an Open Day for the public on May 11<sup>th</sup>, this year.

Some of the public highlights on the farm have been Kohekohe Sunday, organised by trustee, Sue Blaikie, on Queen's Birthday, a chance to see these wonderful trees flowering. A successful event in June 2013, run by Kapiti Joggers that attracted 150 participants was the "In the steps of the Marines" walk/run. This event will be repeated on May 25<sup>th</sup> 2014. Jan Nisbet, Sue Blaikie, and Dawn Bush ran a successful school day. Jan has developed some great resources for children. Orienteering will become a regular event after a successful day and 'geocaching' sites are being set up.

The Whareroa Guardians Community Trust also had a presence at the Kapiti Coast District Council's Sustainable Garden Show, where we shared information about the farm with the public.

Forest health is improving, especially around the bush edges, and now there are plenty of seedlings on the forest floors. The pest control team caught 498 pests, the largest number of which were rats and mice, followed by possums. This work is crucial to the ongoing health of the biodiversity on the farm. Thank you to Shane Cave, Shane Williamson, Scott Hill, and Jason Bohmer.

Visitor numbers are demonstrating the public's interest in the farm, as Department of Conservation records show 8753 mountain bikers and 3635 walkers visited Whareroa in this year. This is a conservative figure as not all access points were monitored.

The East-Ridge Track is due to open this winter. This track serves horses and trampers and was a major project for volunteers over this last year. Signs have been funded by the Walking Access Commission with additional signs funded by the Department of Conservation.

With the onset of Climate Change, extreme weather events are likely to become more common and Whareroa Farm sustained some storm damage in one of the big storms in 2013. Gums trees that had fallen and blocked the Link Track were cut up and sold for firewood logs.

## Facebook/Nature Space

Trustee, Scott Hill, has set up and administers, these Whareroa Farm web pages and they have been very successful. They are a great way to stay informed about what is happening on the farm so check them out.

## Projects for 2014 - 2016

A planting project to connect Matai Bush to the Upper Bush will be undertaken to enhance biodiversity in the area.

Planning for the Ramaroa Wetland planting is underway. Fencing for the area has been confirmed and the Trust is now applying for funding to purchase the plants.

Liffet Stewart is coordinating a project to create a Commemorative Planting area on the farm.

## Volunteers

Many volunteers took part in projects supporting the farm including planting and working bees. Some return regularly to volunteer on and for the farm. The Whareroa Guardians Community Trust would like to thank:

Dawn Bush: minutes secretary

Rachel Salive: fund raising (with Trustees)

Helen and Tony Griffiths: bird monitoring

Dick Caldwell: track mowing

Bernard Cammack: Dell Track and picnic area

Don and Mary Beggs: gorse grubbing and fence post removing

June Rowland and Laura Van Peer: catering for planting sessions (BBQ) and working bees

"Morning Maidens": Jan Nisbet, Liffet Stewart, Sue Blaikie, Ann Evans, Dawn Bush and Penny Redward

Ian Redward: weed eating

Youngsters: Ruby and Kieran Durrant - Bush, Tatiana Bailey, Miyako and Enzo Cammack, Alex and Rosie Barsanti were regular attendees

Theo Barsanti, Jonathan Waterworth, Jools Joslin, Jenny Rowan (also loan of caravan): 4WDs

Julie Lines and Bruce Bulmer: carpet squares

Chain saw gang: Theo Barsanti, Bernard Cammack, Scott Hill, Shane Cave, Bruce Bulmer, Matt Callaghan, Shane Cave, Steve Lewis, Ann Evans and Ian Redward (undertook 4 days of training)

John Porter: campaign for correct spelling of "Mackay"

Sascha Wassong: for Cairn construction and benches

Rachel Kiel-Taylor and Harry A'Court: developing brochure

Sue Blaikie, Liffet Stewart, and Ann Evans: potting up

Grant and Dawn Wilson: maintenance of The Link track.

And of course, ALL the volunteers who have come to the planting and working bees.

## Grants and Donations

- Walking Access Commission: \$2,800 towards East Ridge Track
- Living Legends and Living Legends Plus (Project Crimson and Tindall Foundation): \$1,500 for Schools' planting in winter 2013, and \$5,000 a year for 3 years for restoration planting in 2014 to 2016.
- Wellington Community Trust: \$6000 towards the joining of Matai Bush and Upper Bush in 2014
- Kapiti Pakeke Lions: \$500 for plants
- Lions Club of Kapiti: \$400 for planting tools
- Waikanae Garden Group: \$150 for walnut trees at entrance



- Picnic tables: two at the Hub from AD Architecture (Peter Davis) and one above Matai Bush from Pat Menzies. Also, Ann Evans' Kaitiaki Award money provided two picnic tables in the Dell. (There are a number of other locations where picnic tables would be good and further donations are welcomed)
- Kapiti Coast District Council, Greater Wellington, Nga Uruora, Kapiti Rotary and Manakau Village Nurseries: tree donations
- Nga Uruora: donation of trees
- Rachel Kiel-Taylor: donation of a barbeque
- Individual donations in addition. "Give a Little" option linked to Facebook and Nature Space

**Many, many thanks to all these donors.**

### **Farming**

The Farm continues to be grazed by Will van Crutchen.

### **Department Of Conservation**

Special support has been appreciated from Rob Stone, Dan Touhy, Colin Giddy, Matt Barnett & Susie Richards in a difficult working culture of restructuring for Department of Conservation staff.

### **Links to neighbouring groups**

The Guardians work very closely with Friends of QE Park, Greater Wellington and Nga Uruora. It is good to be part of a wider restoration community.

### **Trustees**

Rachel Kiel-Taylor (Chair)

Mic Keith (treasurer)

Ann Evans (secretary)

Liffet Stewart (deputy chair)

John Lancashire

Jenny Rowan

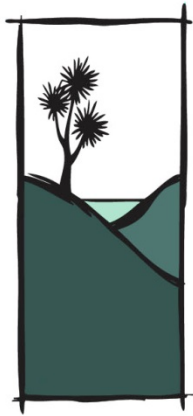
Sue Blaikie

Theo Barsanti

Scott Hill

Carol Reihana (iwi trustee)





# WHAREROA GUARDIANS COMMUNITY TRUST

## Whareroa Update 18 July 2014

---

### **Our 2nd planting session will be Sunday July 20th, 9am to noon**

Volunteers can drive in to the Hub and there is then a short walk up towards the Water Intake where we will be based. Holes will be pre-dug, (many thanks to Jason Bohmer) and so we will be able to get even more plants in the ground. Another load of plants, this time from Kapiti Nurseries, will be delivered about 8am that morning (any “larks” are welcome to join us for unloading). The route will be marked by flags from the entrance. Please leave all gates as you find them. Morning tea at the site and BBQ hotdog afterwards will be at the Guardians’ shed at the entrance.

Please come and help if you can: wear strong footwear and gloves and bring tools if you have them. We can provide some planting spades and grubbers. Light work is available. Everyone welcome, especially children.

### **Future plantings – Sundays August 3<sup>rd</sup> and 17<sup>th</sup>, Sept 7<sup>th</sup> and 21<sup>st</sup>.**

### **Last Planting Bee, 6<sup>th</sup> July**



A fabulous start was made to this year’s planting with a beautiful day and a good turnout, we estimate at least 500 plants went in. Children explored right up to the top of the ridge, Julie brought home made biscuits and passing mountain bikers stopped to give a hand. The new site takes restoration further into the heart of the farm; being close to the two native forest blocks (above)



gives a special feel. 960 good plants from The Greenery, Manakau were delivered the day before; Theo B and Jenny R made good use of their vehicles getting the plants as close to the site as possible, a muddy exercise. Elke, Gail and Julie cut carpet squares while Laura created another delicious hot dog lunch at the shed. See later photo showing site in context and sprayed spots.



Grant, The Greenery, with plants



Theo & Jenny unloading



TruckTruck took plants into action



Water intake in background



Walking back to shed for hot dog

**Many thanks to:** Peter Kentish, Dick Caldwell, Ian & Penny Redward, Liffet Stewart, Jan Nisbet, Dawn Bush, Kieran Durrant-Bush, John Rowland, Theo Barsanti, Cherie Ruscoe, Janice Mears, Mic Keith, Harley Gibson, Julie Lines, Maggie Cummins, Jenny Cliffe, Niamh Maguire, Laura van Peer, Sue Clark, Doug Morrell, Don Beggs, Jenny Rowan, Elke Diedrichs, Gail Lewis and Ann Evans. Bernard Cammack continued work on the Dell path. Also thanks to Peter Davis for taupata plants and Julie for yet more home carpet cutting.

### Kapiti Mountain Bike Club action

A group of mountain bikers coordinated by Cherie Ruscoe have begun planting along the Link Track. Plants were donated by the Guardians and the Rotary Club of Paraparaumu (apologies to this club as they were wrongly titled in the last Update). We really appreciate this added commitment by KMTB club, thanks to all involved. They have been working hard developing their downhill track.



The end is in site, beyond the pines



MTBC Planting group



Progress is amazing with the lower section completed and considerable height gained. It is tough work but must be very satisfying seeing the result. Anyone keen to be involved can check out their Facebook page for info and contact details.



MTB track on left. Guardians' planting spots beyond



Foel Eryr, erected 2000BC

## Cairn

This bronze age cairn has stood on the Prescelli Hills, in SW Wales for the last 4000 years. Will our cairn do the same?

## School's Planting Day and other schools' activity

This is planned for Weds, July 30<sup>th</sup> with groups from Raumati South School and Paraparaumu Beach School. If any volunteers are free to help, please can they contact Ann on 021 162 3559. We will spend part of the time planting but also take the children on a bush walk. Jan Nisbet has prepared and put out information signs for added interest.

Jan, Sue Blaikie and Shane Cave recently spent a day at Raumati South School telling them about pests and other wildlife stuff at Whareroa. Wetas are a popular topic and there are lots of weta motels waiting for residents in the bush.

## Trapping Tally

Shane, Shane, Scott and Jason have now removed over 700 animal pests. The impact is very visible in Kohekohe Bush as the ground is deeply carpeted with kohekohe seeds, it's worth a look. Thanks guys.

### **Our contact details:**

[Whareroa.guardians@gmail.com](mailto:Whareroa.guardians@gmail.com) for email

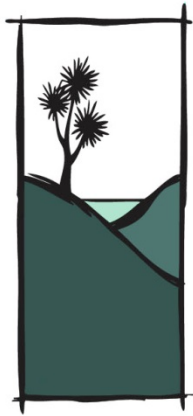
<http://www.naturespace.org.nz/groups/whareroa-guardians-community-trust-inc>

<https://www.facebook.com/WhareroaGuardians>

<http://www.givealittle.co.nz/org/WhareroaG> for donations







# WHAREROA GUARDIANS COMMUNITY TRUST

## Whareroa Update 01 August 2014

---

### **Our 3rd planting session will be Sunday August 3rd, 9am to noon**

Volunteers can drive in to the Hub and there is then a short walk up towards the Water Intake where we will be based. Some holes will be pre-dug and the soil is lovely and soft with easy planting. The planting site is on the side of the hill and provides good exercise. Another load of plants from Kapiti Nurseries, will be delivered about 8am that morning (any "larks" are welcome to join us for unloading). The route will be marked by flags from the entrance. Please leave all gates as you find them. Morning tea at the site and BBQ hotdog afterwards will be at the Guardians' shed at the entrance.

Please come and help if you can: wear strong footwear and gloves and bring tools if you have them. We can provide some planting spades and grubbers. Lighter work is available, gathering empty pots. Everyone welcome, especially children. We hope to reach Upper Bush this weekend.

### **Future plantings – Sundays August 17<sup>th</sup>, Sept 7<sup>th</sup> and 21<sup>st</sup>.**

On Aug 17<sup>th</sup> we will work near the entrance, planting toetoe on the slope above (spots visible) and carex and ribbonwood along the stream edges to give some shade and eventually reduce the summer weed in the stream. We hope those who might find the hill planting challenging will come along to this.

Nga Uruora will kindly donate more spray spots on the slopes below the current planting block as we have an extra 1000 plants from DOC. (Thanks Nga Uruora and DOC). Access to that lower section will be easier and we will return to do that planting in September. There will then be a solid corridor joining the two sections.

### **Last Planting Bee, 20 July.**

It was pretty wet, however a good team turned up to unload and distribute and plant. We progressed about 2/3 of the way along the section and had a lot of fun. It is exciting to see progress and there are wonderful views of the more remote upper valleys. We're really looking forward to making the connection this weekend. The hot dogs were especially welcome, thanks Laura & Elke.



**Many thanks to:** Dick Caldwell, Liffet Stewart, Jenny Rowan, Dawn Bush, Kieran and Ruby Durrant-Bush, John Rowland, Mic Keith, Maggie Cummins, Laura van Peer, Sue Clark, Doug Morrell, Jenny Rowan, Elke Diedrichs, Ann Evans, Peter Davis, Mary & Don Beggs, Peter Kentish, Tony & Helen Griffiths, Ken Fraser and Linda Hill.

### Schools' Planting Day July 30th

Groups from Raumati South School and Paraparaumu Beach School had a wonderful day (as did the volunteers). 130 children with teachers and parents came along in two groups. The children planted around the Kapiti Lookout seats and on the slopes below the track. Spiders were a particular interest. They also explored the Kohekohe Bush using Jan Nisbet's nature "notices" and pulled out karaka seedlings which threaten to dominate some areas of the bush. We hope the children come back again with their families and friends and watch their plants growing.



The plants were funded by Living Legends Plus (Project Crimson), Whittakers Chocolates kindly donated 144 mini bars and Annies fruit bars came at a discount. Many thanks to these



organisations. Living Legends Plus funding is confirmed for another two years so it's good to have that commitment to really establish this as an annual event. Thanks also to the teachers and parents who came along.



*These days could not occur without our volunteers – again, many thanks to: Jan Nisbet for her signs, Ann Evans for coordinating and DOC ranger Amy Brasch. Also to Liffet Stewart, Laura van Peer, Ann, Trish and Brian Howard for packing the “goody bags” and the volunteers on the day: Liffet, Ann, Dawn Bush, Sascha Wassong, Mary Beggs and Frances McMillan.*

*A special thanks to John Rowland who dug the 450 holes. On the same day, we noticed Don Beggs was busy removing fence wires along the East Ridge Track and Dick Caldwell and Henry were mowing tracks - some of the “invisible volunteers” who do stuff without it being recorded.*

**Our contact details:**

[Whareroa.guardians@gmail.com](mailto:Whareroa.guardians@gmail.com) for email

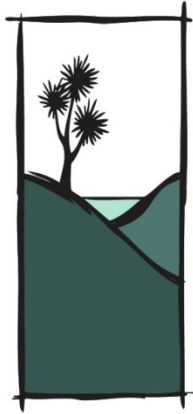
<http://www.naturespace.org.nz/groups/whareroa-guardians-community-trust-inc>

<https://www.facebook.com/WhareroaGuardians>

<http://www.givealittle.co.nz/org/WhareroaG> for donations







# WHAREROA GUARDIANS COMMUNITY TRUST

## Whareroa Update 13 August 2014

---

### **Our 4th planting session will be Sunday August 17th, 9am to noon**

Volunteers can drive in to the Hub and there is then a short walk up towards the Water Intake where we will be based. The forecast is good and the soil is lovely and soft with easy planting. The planting site is on the side of the hill and gives great views. The route will be marked by flags from the entrance. Please leave all gates as you find them. Morning tea at the site and BBQ hotdog afterwards will be at the Guardians' shed at the entrance.

Please come and help if you can: wear strong footwear and gloves and bring tools if you have them. We have some spades and grubbers. Lighter work is available, gathering empty pots. Everyone welcome, especially children. We reached Upper Bush last session along the top of the line and will now continue down. As the Dept of Conservation gave us an additional \$6,000 for plants we will be able to continue further down the slope. Nga Uruora have kindly sprayed more spots below the current edge, in "waves" to give a more natural edge.

### **Future plantings – Sundays Sept 7<sup>th</sup> and 21<sup>st</sup> and October 5<sup>th</sup>.**

Entrance planting has been deferred to allow spot spraying along the stream to work and we will also complete the bush connection.



Sascha, Dawn and Ruby at edge of Upper Bush



New spots will bring the edge further down the slope

## Last Planting Bee, 3<sup>rd</sup> August.

It started pretty moist, after very heavy rain on the Saturday. More lovely plants arrived from Kapiti Nursery and Jenny's TrukTruk and Theo's landrover worked hard getting plants as far in as possible. A good team turned up to unload and distribute and plant and the sun came out mid-morning. We progressed all the way along the very top section and connected the two bush blocks. Ruby and Sascha raced along digging holes, along with John. Sue carried plants despite having her arm in plaster, Liffet and Theo were also key plant distributors and everyone beavered away planting. Subsequent rain has given the trees a really good start. Jason from the pest control team has been concentrating on possums in the adjacent blocks, not many are being found so that is good news for the young plants. Sue and Liffet both brought tam-tam slice for morning tea so we had the Whareroa "bake off" – both equal in deliciousness. Thanks cooks. The lunch hot dogs were good, thanks Elke and Finn.



TrukTruk



1<sup>st</sup> morning tea



2<sup>nd</sup> morning tea



Liffet and Sue and baking



Ruby, Theo and Liffet



Bill



Peter and Ruby



Lots of water in the streams



Cordon bleu hot dogs. Finn & Elke

**Many thanks to:** Dick Caldwell, Liffet Stewart, Jenny Rowan, Dawn Bush, Ruby Durrant-Bush, John Rowland, Sue Clark, Doug Morrell, Elke Diedrichs & Finn, Ann Evans, Peter Kentish, Dave Allen, Janice Mears, Theo Barsanti, Sascha Wassong and Bill Jansen.



## Information Bay

These Updates are now displayed in the entrance information bay, along with copies of track maps and bookmarks for visitors. We hope the maps will encourage people to explore further.

## Water Intake

This structure was built in the early 1940's by the Wellington Hospital Board as there was going to be a TB hospital at Whareroa. Then World War II brought the US Marines and Whareroa and QE Park became the site for their camps, using this water supply. It allows silt to settle and is still providing water from two nearby streams for stock and the entrance toilets.



## Natural Regeneration at Whareroa



On the left is mahoe emerging through gorse, this takes about 10 years. On the right, after about 20-30 years is the next stage with olearia, rewarewa, mamaku, five finger and others joining the mahoe. By 2040 all those gorsy slopes at Whareroa will look like the picture on the right.

### Our contact details:

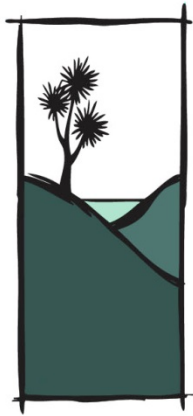
[Whareroa.guardians@gmail.com](mailto:Whareroa.guardians@gmail.com) for email

<http://www.naturespace.org.nz/groups/whareroa-guardians-community-trust-inc>

<https://www.facebook.com/WhareroaGuardians>

<http://www.givealittle.co.nz/org/WhareroaG> for donations





# WHAREROA GUARDIANS COMMUNITY TRUST

## Whareroa Update 03 September 2014

---

### **Our 5th planting session will be Sunday September 7th, 9am to noon**

This time and probably the next we will be back at the Matai Bush/Upper Bush zone but lower down the slope so it will be easier. The lower edge now forms “waves” after Nga Uruora’s later spraying and it will be a wonderful achievement to connect these two areas of native forest. Details later on.



### **Whareroa Farm Reserve has been granted \$33,000 towards wetland restoration and a new tramping/horse track.**

The Guardians applied for two projects to the new Dept of Conservation Community Conservation Partnership Fund. Both were approved and Minister of Conservation Nick Smith along with local list MP Hekia Parata visited the farm on Monday to announce the grants.

The bulk of the money is allocated to a new wetland restoration area, the Ramaroa Wetland, which extends east from the Ramaroa Stream (already retired and planted). This will protect another length of waterway from stock and eventually give an accessible wetland, quite close to the entrance, for visitors to see and enjoy. The project will be our planting focus over the next 2-3 years.





Looking down beyond Cairn to Ramaroa Wetland



Ramaroa Stream planted 2009, wetland joins from top right



Trustees Theo, Jenny & Ann with Nick Smith & Hekia Parata Doc managers Paul, Rob and Matt with trustees John & Theo



\$6000 is allocated to open up a new tramping and horse track leaving the Cairn View Track and going up the Ti Kouka Valley, looping round and passing the Ti Kouka on the skyline and then on to the Rocks at the summit of the reserve (at 320 metres). The views are spectacular and the track introduces visitors to a remote experience away from the busy centre of the farm. In future years, the track will be extended to provide a loop back down the Ramaroa Valley.



Sue by the skyline Ti Kouka



Ann at the summit Rocks, the destination for the new track.



The Guardians are delighted to have both these projects funded. Of course, it means lots more planting for you, our wonderful volunteers, without whom none of the restoration at Whareroa would have happened. Our volunteer input was a major factor in obtaining the grants. Thank you.

**Back to Sunday's planting bee**, volunteers can drive in to the Hub and there is then a short walk up towards the Water Intake. The forecast is good and the soil is soft giving easy planting. The route will be marked by flags from the entrance. Please leave all gates as you find them. Morning tea at the site and BBQ afterwards will be at the Guardians' shed at the entrance.

Please come and help if you can: wear strong footwear and gloves and bring tools if you have them. We have some spades and grubbers. Lighter work is available, gathering empty pots and moving plants. Everyone welcome, especially children.

### **Last Planting Bee, 17th August.**

A lovely morning and it was great to have a group of Paraparaumu Scouts and leaders and parents to help planting by Upper Bush. After planting, Dawn took the scouts on a bush walk where Jan's nature info signs were appreciated. They also removed a heap of karaka seedlings. After morning tea volunteers planted 300 small toetoe in the steep bank above the entrance, Sue Blaikie had sprayed spots and we scabbled on the slope getting them in. The site is not hospitable, but toetoe from two years ago are establishing as are mountain flax. As usual we ended with a hot dog and chat.



**Many thanks to:** Jim, Jenny, Niamh & Abigail Maguire, Tony & Helen Griffiths, Dave Allen, Peter Kentish, Dick Caldwell, Theo Barsanti, Sascha Wassong, Shane Williamson, Robyn & Anfri Hayward, Janice Mears and daughter, Andy Hummel, Linda Hill, Laura van Peer, June and John Rowland, Sue Clark, Doug Morrell, Elke Diedrichs, Rachel Salive, Pam, Dawn Bush, Ruby & Kieran Durrant-Bush, Ann Evans, Jenny Rowan, Mic Keith, Bernard Cammack, Jan Nisbet and Sally plus about 20 from the Scout group. Apologies if anyone is missed, (there was a lot going on) please let us know.





*Planters on slope above picnic table by entrance*



*Close up*

## Spring and nature at Whareroa



Peripatus found at Whareroa by Tony Griffiths, very primitive and uncommon creatures. Peripatus are like worms with legs – the name peripatus comes from the Greek ‘to walk about’. They are also called velvet worms because their many fine bristles make them look velvety. They live under rotten logs. Google [www.teara.govt.nz/en/peripatus](http://www.teara.govt.nz/en/peripatus) to find out more. Recently a motorway route near Dunedin was diverted to avoid an area where peripatus live.

Helen G saw a tomtit during a recent bird count. Tui are chasing each other and enjoying the kowhai flowers. Clematis is flowering high on the western slope of Carex Valley. We should soon hear the shining cuckoo.

**Future plantings: Sundays Sept 21st (Matai Bush) & October 5th(entrance)**

**Sunday November 2nd: Picnic/Open Day for Conservation Week**

**Our contact details:**

[Whareroa.guardians@gmail.com](mailto:Whareroa.guardians@gmail.com) for email

<http://www.naturespace.org.nz/groups/whareroa-guardians-community-trust-inc>

<https://www.facebook.com/WhareroaGuardians>

<http://www.givealittle.co.nz/org/WhareroaG> for donations





# WHAREROA GUARDIANS COMMUNITY TRUST

## Whareroa Update 16 September 2014

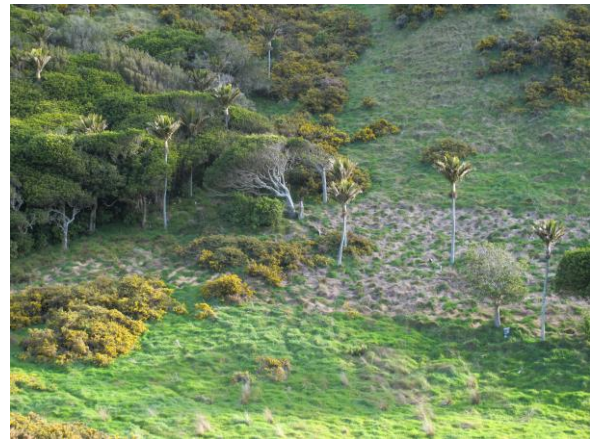
---

### **Our 6th planting session will be Sunday September 21st, 9am to noon**

This will be the last chance to take part in the historic connecting of Matai Bush to Upper Bush. Just 300 spots remain vacant after an amazing planting season has seen about 3,000 going into this area, as well as 300 toetoe and the schools' 450 above the entrance. We hope to finish this block before morning tea and then move back to the picnic area at the entrance where another 400 spots await carex and ribbonwoods to start shading the stream so as to stop the dense water parsnip weed infestation which prevents fish passage. If not finished they will be planted at the October working bee.



The 300 remaining spots are at the eastern end of the line



Closer view, the upper spots have already been planted

Volunteers can drive in to the Hub and there is then a short walk up towards the Water Intake. The forecast is again OK. The route will be marked by flags from the entrance. Please leave all gates as you find them. Morning tea at the site and BBQ hotdog afterwards will be at the Guardians' shed at the entrance.

Please come and help if you can: wear strong footwear and gloves and bring tools if you have them. We have some spades and grubbers. Lighter work is available, gathering empty pots, putting down carpet squares and moving plants. Everyone welcome, especially children.



## Last Planting Bee, 7th September.

Another lovely morning and a great turnout, we almost finished but not quite. Good to see more new faces as well as old friends such as Andrew who'd last planted back in 2007 and was blown away by the growth of those trees along the main race. Julie provided another trailer load of cut carpet, we also have felt mats surplus to a Nga Uruora project to help keep the weeds down.



**Many thanks to:** Reece Baker & Hanna Emke, Peter Kentish, Dick Caldwell, Theo Barsanti, Janice Mears, Laura, Cory, DJ & Bill van Peer, June & John Rowland, Sue Clark, Doug Morrell, Rachel Salive, Dawn Bush, Ruby & Kieran Durrant-Bush, Ann Evans, Jenny Rowan, Mic Keith, Bernard Cammack, Bruce Bulmer, Paul Callister, Don & Mary Beggs, Peter & Andrew Davis, Bill Jansen and Julie Lines for carpet squares.



Relaxing among the plantings after morning tea before setting to again



## **Pests and Birds and Tracks**

The pest gang have now culled 848 furry four legged creatures including 178 possums, 40 mustelids and 309 rats since April 2013. Another tomtit was seen, this time in Kohekohe Bush. A kaka was spotted recently on the Raumati Escarpment, presumably from Kapiti Island; if anyone sees one at Whareroa, please let us know.

The Mountain Bike Club Track is proceeding steadily with weekend working bees. Blue painted posts have appeared on the East Ridge Track though horse riders and walkers were already using it. Don is removing the surplus posts.



Clematis forsterii flowering today on Upper Link Track, Mountain Bike Track across the valley

**Future working bee: Sun October 5th(entrance). No BBQ, just morning tea.**

**Sunday November 2nd: Picnic/Open Day for Conservation Week and to officially open the East Ridge Track.**

[Whareroa.guardians@gmail.com](mailto:Whareroa.guardians@gmail.com) for email

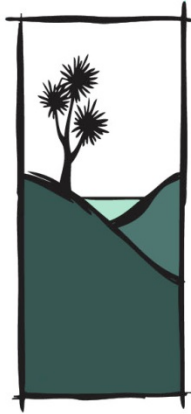
<http://www.naturespace.org.nz/groups/whareroa-guardians-community-trust-inc>

<https://www.facebook.com/WhareroaGuardians>

<http://www.givealittle.co.nz/org/WhareroaG> for donations







# WHAREROA GUARDIANS COMMUNITY TRUST

## Whareroa Update 03 October 2014

---

**Our next working bee and 7th planting session will be Sunday October 5th, 9am to noon. There will be BBQ hotdog afterwards, by popular request!**

This time we will be working by the entrance, planting along the stream. In summer the stream fills up with weed: water parsnip. This forms a dense mat blocking fish passage. The only long term way to control it is for the stream to be in shade. This will take perhaps 5 years to establish.

We are starting with carex secta right along the edges (some may get washed away in floods) and manatu (ribbonwood) and kohuhu (black matipo) a bit further back. Grass has been sprayed and the ground is not rocky so planting should be easy. Additional jobs include cutting those bits of gorse and other bushy weeds popping up around the picnic area and on the bank above (gloves and handsaws, secateurs or loppers needed for this).

**Sunday 2<sup>nd</sup> November from 11am.**

**Whareroa Farm Reserve Picnic for Conservation Week (Nov 1<sup>st</sup> to 9<sup>th</sup>)**

BBQ's will be set up at the Hub

Children's nature activities eg "nature hunt", decorating weta motels, pests & trapping demo

Opening of East Ridge Track (funded by Walking Access NZ)

Guided walks to Ramaroa Wetland site (for planting 2015/16) and Ti Kouka Loop path

See the route of the approved Ti Kouka/Rocks Track due to open early 2015

If anyone wants to bring their guitar, drums etc the Dell gives a perfect ambience for music *al fresco*

**with**

**Kapiti Mountain Bike Club Trail Progress Day**

Children's MTB activities at the Hub and

Guided walks/cycles to see the amazing progress on their new downhill track

***Please put this date in your diary now and invite your family and friends.***

## Last Planting Bee, 21<sup>st</sup> September

Another great session planted the last of the spots by Upper Bush. The sun shone yet again after torrential rain the day before. In places it felt as though we were planting in a stream, the ground was so saturated. Welcome to new planters Caroline and Markus who came out from Wellington to help. A total of 3,500 trees have now gone into that area and will give a good base to connect the two native forest areas. The rain has settled the plants into the ground, earlier plantings from July have taken very well with minimal losses.

The plants were funded by the Wellington Community Trust, Living Legends Plus (Project Crimson) and from income from the farm via DOC. We again thank these organisations, without grants restoration in the reserve would be much slower.



**Many thanks to:** Theo Barsanti, Janice Mears, Andy Hummel, Linda Hill, John Rowland, Dawn Bush, Ruby & Kieran Durrant-Bush, Ann Evans, Ian and Penny Redward, Markus Breitenmoger, Caroline Holden, Michael Stace, Liffet Stewart, Maggie Cummings, Solly Solomon, Miyako and Enzo and Bernard Cammack (who was busy in the Dell), Jan Nisbet came on her crutch to give moral support and Elke Diedrichs provided yummy hotdogs back at the shed.

In addition lots more work has been done along the East Ridge Track with weedeating (Ian R), putting up marker poles (Liffet, Dawn, Ruby, Penny and Ann) and thistling. Dick and Henry have been mowing paths and Helen continues the regular bird counts with Tony. Thanks everyone.





Markus & Caroline



Enzo



Miyako



Penny & Kieran



In action



Almost finished

## KCDC Community grant for nature info signs

Some will have seen the colourful nature info laminates around the Kohekohe Bush Walk. These were developed by Jan Nisbet. A grant from the recent KCDC Community Grant round will allow further development. Thanks Jan and Rachel.

## Pests update:

The pest tally continues to rise; it is now 947 including 193 possums. They are particularly concentrating around the weta motel area, one trap there has caught 10 animals. Well done pest team. An infrared camera recently recorded a cat hunting in Kohekohe Bush at night along with several rats. Unfortunately the cat is more likely to be after birds than rats.

## Other Whareroa Reserve Activities:

There are now 12 Geocaches on the farm and a Rogaining event is planned for late November. Wellington Forest & Bird are running a tramp this month led by Karen Palmer who did a major fish study of the Whareroa Stream. It is great to see so many uses developing. The maps in the entrance info bay are popular; they are disappearing at a rapid rate as are the book marks.

## Our contact details:

[Whareroa.guardians@gmail.com](mailto:Whareroa.guardians@gmail.com) for email

<http://www.naturespace.org.nz/groups/whareroa-guardians-community-trust-inc>

<https://www.facebook.com/WhareroaGuardians> Lots of additional info is posted here

<http://www.givealittle.co.nz/org/WhareroaG> for donations



# **Whareroa Farm Reserve                      Sunday Nov 2nd 2014**

## **Picnic/BBQ, Children's activities for Conservation week & Kapiti Mountain Bike Club Track Update**

From 11am, all day: Children's nature trails and mountain bike activities, walks and exploring

11am:        Opening of new East Ridge Track for trampers and horses (NZ Walking Access Commission funded)

Noon:        BBQ's fired up at the Hub

1.30pm:    Guided tours of the new MTB down trail and Akatarawa backcountry trails

2pm:        Children's activities at the Hub: weta motels, pest trapping demo, face painting etc.

2pm:        Guided walks, start at the Hub: Ramaroa Wetland and Up to Ti Kouka

Helibike to the Akatarawa backcountry, \$125pp, (numbers permitting, contact KmtbC)

*Bring your family, friends, food and bike to enjoy the bush and birds and see progress on MTB track.*

Entrance at Mackay's Crossing, SH1 north of Paekakariki, opposite QE Park.

BYO picnic/BBQ food (BBQ's provided), rug, musical instruments to play in the Dell and mountainbike.

No dogs, no fires. This is a working farm reserve and has rough terrain with streams: you are responsible for your own safety.

Facebook: Guardians: [www.facebook.com/WhareroaGuardians](http://www.facebook.com/WhareroaGuardians)    KmtbC: [www.facebook.com/pages/Kapiti-Mtb-Club/127533290720364](http://www.facebook.com/pages/Kapiti-Mtb-Club/127533290720364)

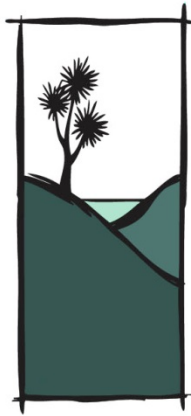


**WHAREROA  
GUARDIANS  
COMMUNITY TRUST**









# WHAREROA GUARDIANS COMMUNITY TRUST

## Whareroa Update 09 November 2014

---

### Whareroa Farm Reserve Picnic for Conservation Week Nov 2<sup>nd</sup>, combined with Kapiti Mountain Bike Club Trail Progress Day

This was a very successful event despite the poor forecast and strong winds. The 150 or so who came had a busy and enjoyable time.

First off was the official opening of the East Ridge Track by George Williamson of Walking Access Commission NZ, accompanied by wife and photographer Pam. This is for walkers and horses; sadly the horses who came to the opening were spooked by flags and had to retreat. We are pleased that a number of riders are using the track regularly as are lots of walkers. It has a steep initial section but once past that the gradient is reasonable. Probably the best way to enjoy it if not too fit is to go up to the top of the reserve using the Link Track and then down the East Ridge to enjoy the good views.



George Williamson cuts the ribbon



Young riders setting off up East Ridge

Lots of mountain bikers, young and old visited to enjoy the kids' course at the Hub and to be guided through the new downhill MTB track, usable after hundreds of hours of hard work by a dedicated team of diggers and rock hewers. The track is not yet open to the public, it needs bridges and further fine tuning.



Partway up East Ridge after opening



Airborne

After lunch Shane Williamson of the pest team held a group of children and adults engrossed with his description of pests and how to catch them, illustrated by real rats, stoats and weasels. Children then assembled, decorated and put up weta motels in the bush.



Shane demonstrating pests



Rat, stoat and weasel

Some visitors enjoyed guided walks and lots of children did the new nature trails, see attached pdf for the leaflet. At the moment there are stamps at each site, no doubt they will run out of ink or disappear over time but the marker posts will be left for people to explore less visited places.



What is in the trap?



Enzo makes marker posts for nature trail



Assembling weta motels in the bush

## Last Planting Bee, 05 October

300 carex secta were planted right along the edges of the stream at the entrance picnic area (some may get washed away in floods) and about 200 manatu (ribbonwood) and kohuhu (black matipo) were planted a bit further back. This is to shade the stream to suppress weed growth. Additional jobs included cutting of gorse and other bushy weeds around the picnic area and on the bank above.





**Many thanks to:** Elke Diedrichs, Liffet Stewart, Dawn Bush, Penny & Ian Redward, Robyn & Matthew Hayward, Bruce, June & John Rowland, Christine, Sophie Michael (June's great grandchildren), Theo Barsanti, Mary & Don Beggs, Bruce Bulmer, Andy Hummel, Reece Baker, Dick Caldwell, Hanna Emke, Sue Clark, Doug Morrell, Brigitte, Nico, Linda Niccol. Thanks Linda for photos. In addition lots of work was done on the East Ridge Track and general tidying up in preparation for the open day. Many thanks everyone.

### **Milk trees. Turepo. *Streblus banksii*. Plants donated by Otari**

Finn and colleagues from Otari Native Botanic garden have planted about 30 Turepo trees near the gums, helped by Whareroa volunteers. These are now locally uncommon and the trees were grown from cuttings from local trees to form a breeding population and seed source. Finn has put up an information sign. It is proposed that other less common native plants will also find a home at Whareroa.



The Turepo grove



Bee on lemonwood in Ramaroa plantings

## **Pests update:**

The pest tally continues to rise; it is now over 1100. The group has grown to include John Rowland and Solly Solomon which will allow more traps to be placed. Significant trapping is also occurring around Paekakariki. If pest numbers drop sufficiently more native birds will breed. It would be lovely to see kaka at Whareroa, they are now extending beyond Zealandia in Wellington.

## **Statistics for July, August, September**

4,500 native plants went in the ground. 1,550 hours of volunteer work was donated. 77 Whareroa volunteers participated as well as 20 scouts/families. This work includes planting, fund raising, planning, track building, pest control, bird counts, developing children's projects and admin. If costed at \$20 per hour that is equivalent to a donation of \$31,000 value in 3 months. This is the busiest quarter. 130 primary school children also planted trees. The mountain bikers have contributed their work, not included in these figures. When one looks at all the other restoration projects running between Otaki and Paekakariki the Kapiti community can stand tall. Thank you.

## **New book for children 'The Trees and Me' – an invitation from local author:**

Bianca Begovich. "Please join me at 2pm on Sunday 7 December at Mahara Gallery (Waikanae) where regional councillor Nigel Wilson will launch my second book. 'The Trees and Me' is the second story in a 3-part series of children's books aimed at changing the way 4-8 year old children think about sustainability and caring for the environment. The first book (The Sea and Me) is already available at local bookstores and Mahara gallery or through <http://createbooks.co.nz/> The series puts us in the middle of the story, encouraging critical thinking about our world, and what we can all do to take better care of it. Bring your children along to join the activities, hear 'The Trees and Me' and get your signed copy of the book. Tell your friends too!"

## **Whareroa Wish List**

More picnic tables and seats are needed, eg at Five Ways, on East Ridge and Link tracks and another at the Hub. Five tables have already been provided by supporters. If you are interested in donating a "structure" (a small "donated by" label will be attached) phone Ann, 021 162 3559. Thank you.

## **Website set up.**

Is there someone out there able to volunteer to set up a website for us? If interested please email us or phone Ann, 021 162 3559 .

## **Next working bee will be Sunday December 7<sup>th</sup> , 9 to noon.**

Releasing this year's plantings between Matai Bush and Upper Bush. These plants are thriving, but so is the grass! If you have a free hour at any time, clearing round them will be very beneficial. The next few weeks are critical as grass is flowering and then topples over, covering smaller plants. Bring shears or grubbers. Morning tea will be provided.

**No working bee in January but volunteers are welcome to keep active at Whareroa!**

## **Our contact details:**

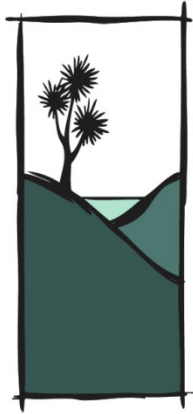
[Whareroa.guardians@gmail.com](mailto:Whareroa.guardians@gmail.com) for email

<http://www.naturespace.org.nz/groups/whareroa-guardians-community-trust-inc>

<https://www.facebook.com/WhareroaGuardians> Lots of additional info is posted here

<http://www.givealittle.co.nz/org/WhareroaG> for donations





# WHAREROA GUARDIANS COMMUNITY TRUST

## Whareroa Update 05 December 2014

---

### **Next working bee will be Sunday December 7<sup>th</sup> , 9 to noon. All welcome**

Releasing plantings above entrance by the Kapiti View Lookout. Also some small gorse clearing on the slope. Bring shears, secateurs, loppers, hand saws or grubbers. Morning tea will be provided.

### **November was schools' water catchment study month**

Jan Nisbet arranged four successful school days with 8 classes from Raumati South and Kenakena Schools. Water catchment was studied with Natalie from KCDC and the children also explored the bush, learned about pests and enjoyed the nature trails. Whareroa volunteers Dawn Bush, Sue Blaikie, Liffet Stewart, Frances McMillan & Bruce Bulmer helped. Thanks to all.



### **Oral History**

Our application to the Lion Foundation for funding to record those who “saved” Whareroa for the community was successful with a grant of \$10,000. Interviews with key people will be done over the next 6 months by oral historian Jiff Stewart. Many thanks to Rachel Salive who saw the application through.



## Ti Kouka/Rocks Track

Work is progressing well. Thistles are being cleared, posts painted (thanks Dulux for free paint), stiles have been erected and signs ordered. More work on gorse and finalising the route will happen in January then the posts and signs will be put up. Should be open in February.



Liffet & Dawn in the thistles



Enzo & Miyako painting



Track line visible across the valley



Rob Bigwood of Bush & Sea



New stile at farm race



New stile at top of Ti Kouka Stream loop

## East Ridge Track

Our fence post removers, Don & Mary Beggs are moving down to the Dell having cleared the East Ridge. Some posts and battens live again as the "Bus Stop", created by Penny & Ian Redward. Again thanks. The track is proving very popular.



Looking out from new seat East Ridge



Enjoying the "bus stop"



Gorse clearance Upper Dell

## Gorse in the Upper Dell

A mini working bee on Nov 30<sup>th</sup> by our chain saw gang and draggers has made huge inroads into the gorse. One more session will be needed to clear it right round. Bernard C continues to build the path which will lead to a platform for seats looking over the Dell and out to sea. *Many thanks to: Ian Redward, Theo Barsanti, Bernard Cammack and Shane Williamson on saws and Dawn Bush, John Rowland, Bruce Bulmer, Ann Evans, Jean McCallan, Sue Blaikie and Jan Nisbet on hauling.*

## Pests update:

5 Weasels & 1 Stoat caught in November as well as more rats and mice. Unfortunately some traps have been stolen, we hope they are still being used for pest catching somewhere. Log seats have also been disappearing. Grrrr.

## Website set up.

Colin Crilley has offered to set this up for us. Scott Hill will also be actively involved. Many thanks.

## Fencing round Ramaroa Wetland Planting site and the Cairn

DOC have confirmed that this will be done by the end of March, in good time for next year's planting. Plants have been ordered.

## Nature



Clematis forsterii, Upper Link



Parsonsia heterophylla, Native jasmine, Upper Link. It has a lovely smell

**No working bee in January but volunteers are welcome to keep fit and active at Whareroa! All those new plants will benefit from releasing from long grass.**

***Again, thank you to all volunteers for their huge input to Whareroa through 2014.***

**Our contact details: Additional photos are posted on Facebook and Nature Space**

[Whareroa.guardians@gmail.com](mailto:Whareroa.guardians@gmail.com) for email

<http://www.naturespace.org.nz/groups/whareroa-guardians-community-trust-inc>

<https://www.facebook.com/WhareroaGuardians> Lots of additional info is posted here

<http://www.givealittle.co.nz/org/WhareroaG> for donations