

# WHAREROA GUARDIANS COMMUNITY TRUST

Update 15 July 2021

---

**4<sup>th</sup> Planting bee Sun Aug 1st, 9-noon. All welcome.**

**NB This is a change in date. Sausage sizzle after, back at the shed.  
It will be cold, wear warm clothes, boots and gloves.**

Continuing in Carex Valley. Spots should be well visible by then. Progress has been so good that this may be the last big planting session of the season, apart from Sept 5<sup>th</sup> (see below).

**Last planting: Carex Valley, July 4th**



A Further great session, helped by an enthusiastic group of young keas and cubs with parents. 1500 natives have now been planted, in 3 sessions. More carpet squares were placed. Shane and Shane

buzzed around in LUV supplying planters with trees and Theo braved the mud supplying carpet squares. Mike brought along some Whau he had grown. We were excited to have some small totara which had been grown from Whareroa seed from the adjacent big totara.



**Many thanks to:** Richard Caldwell, Ian Redward, Peter Kentish, Bruce Bulmer, Shane Williamson, Ann Evans, Linda Hill, Denys Crengle, Gary Crilley, Peter Davis, Kerry Gray, John Rowland, Brian May, Liffet Stewart, Sue Campbell, Carol & Ray Molineux, Mike Bradstock, Rachel Calvert, Donna Cherry,

*Michelle de la Rey, and welcome to new volunteer Janet Walker as well as members of Kapiti Cubs & Keas: David & Luke Haxton, Mark Hammond, Jack Foley, Carri & Charlie Baum, Christina, Siri & Rune John, Marcus & Fred Hopkinson, Jan, Rebecca, Ewan, Ella & Isaac Moore, Raquel Barros & James Meeres. Thanks also to Shane, Liffet, Ann and Theo who unloaded another load of 400 plants. Also, many thanks to Darrel and Diane for a good sausage and onion sizzle to round off the morning.*

“Trees that Count” donated 400 more trees thanks to Wellington Region donors. These were supplied by Te Rito Nursery in Porirua who specialise in ecosourced native plants for restoration.

During recent weeks the blackberry gang have made huge advances against the Carex Valley infestations, thanks again to Sue & Alex, Liffet, Dawn, Ian, Lynette & Richard.



Zone cleared of blackberry above this year’s planting area in Carex Valley. The team has to monitor for 3 years before being sure it is clear.

## Whareroa Guardians Website now live

Scott Hill, our web maestro in Switzerland has worked with Andy Mackay to set up our own website under the umbrella of the Kapiti Biodiversity Project. This is a work in progress but is now live. Please use it - feedback is welcome. Huge thanks Scott and Andy; many hours have gone into this project. There will be regular postings and links will be included in these Updates. Facebook also has them.

[www.kapitibiodiversity.org.nz/whareroa](http://www.kapitibiodiversity.org.nz/whareroa)

<https://www.kapitibiodiversity.org.nz/whareroa#wfr.p0.01210712>

## Other stuff

Denys has been **improving the Ramaroa Wetland Track** and making it accessible for mowing along the whole length.

**Wellington Botanical Society** recently visited Ramaroa Bush searching for interesting specimens. Matai and milk tree seedlings were found as well as fungi. Go to this link to see their photos.

<https://inaturalist.nz/observations?nelat=->

[40.70033333468186&nelng=175.4253133308806&on=2021-07-03&photos&place\\_id=any&swlat=-41.01331513730917&swlng=174.8684960454562&verifiable=any](https://inaturalist.nz/observations?nelat=-40.70033333468186&nelng=175.4253133308806&on=2021-07-03&photos&place_id=any&swlat=-41.01331513730917&swlng=174.8684960454562&verifiable=any)

**Orienteering at Whareroa Sunday August 15<sup>th</sup>** This is a fun way to explore the terrain. Just turn up to register. Navigate from point to point – you can race but that is not essential.

### More stiles to improve access and protect fences and planting

Bruce has been quietly working on these. The latest will allow us to keep the gate to the Cairn padlocked to prevent accidental open gate events. The one on the right will protect the fence between grazing and planting at the top of Mamaku Valley, off Carex Valley



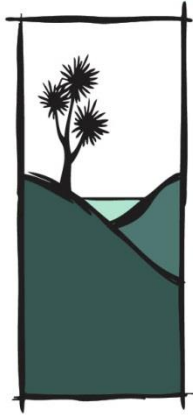
### Vandalism again at the Kiwi Caravan and rubbish in the car park.

We are disappointed that some people are so anti social; Rachel collected these 500 items. Police visited to take samples. Do report any suspicious activity. Police will increase their patrols. When the damaged display cabinet was removed from the wall there were dozens of ladybirds hibernating in the crevices (see pic below) Hopefully they will find a safe new home.



**Future date:** Sept 5<sup>th</sup> will be a special planting/picnic with Rotary to recognise the 75,000 trees planted for the Whareroa Forest of Peace and Remembrance.

<https://www.facebook.com/WhareroaGuardians> Additional info is posted here.



# WHAREOA GUARDIANS COMMUNITY TRUST

Update 15 July 2021

---

**4<sup>th</sup> Planting bee Sun Aug 1st, 9-noon. All welcome.**

**Sausage sizzle after, back at the shed. Morning tea on site.**

**Wear warm clothes, boots and gloves. Bring a digging tool and a sharp knife or saw (see below)**

Hi Everyone. Forecast is for a mild day.

There are 80 trees left on site from last time and another 200 or so to take across the stream as well as 100 carex secta.

The Carex will go in the boggy ground between the picnic site and the slope. They are VERY potbound and need a sharp knife or saw to get them out of their pots. They can each be sawn in half to make 2 plants. There are no sprayed spots for the carex – we just need to dig holes about 600mm apart in the grass

We will start at the furthest away spots up valley and work back towards the Gums.

The sprayed spots are now very visible.

Theo and the two Shanes will be transporting plants and carpet squares.





Native tree seedlings will be helicoptered to the tops of the distant brown ridges on Sunday morning ready for planting to start on Monday. This may still be happening when we arrive at 9am, please keep away if so. The land in the foreground will be planted in the next few weeks. The top of the Gum plantation is visible centre right.



Kereru just by the Farm Race this week. It's been a rainbow winter - another stunner.



# WHAREROA GUARDIANS COMMUNITY TRUST

## Update 12 August 2021

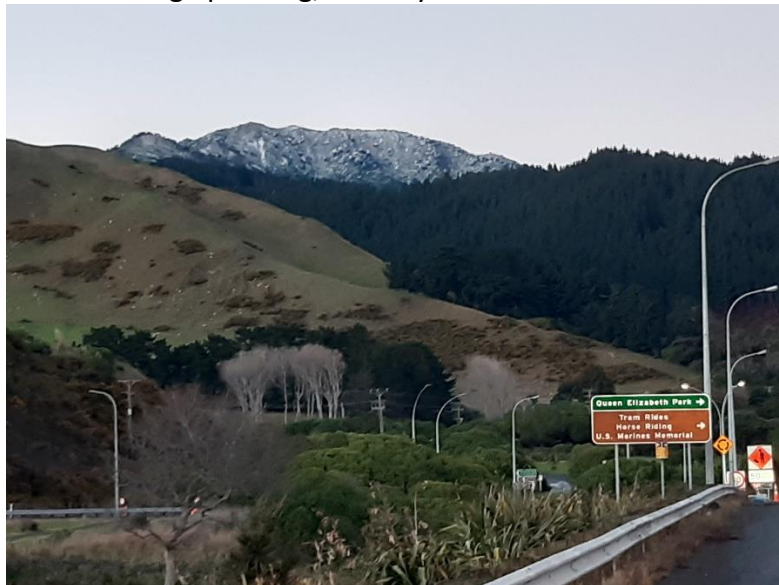
---

**5<sup>th</sup> Planting bee Sun Aug 15th, 9-noon. All welcome.**

Sausage sizzle after, back at the shed (the last one so enjoy). Morning tea on site. Wear warm clothes, boots and gloves. Bring a digging tool and a sharp knife or saw (see below)

Hi Everyone. Forecast is for a mild day.

The main job will be planting 100 more Carex secta in the boggy ground between the picnic site and the slope. They are VERY potbound and need a sharp knife or saw to get them out of their pots. There are no sprayed spots for the carex – we just need to dig holes about 600mm apart in the grass. A few trees need to go at blocked section of Forest Loop track. There are also a number of “specimen” trees – kahikatea and pukatea and nikau which will need stakes and carpet squares. Some of these will be planted up the Ti Kouka Valley, where there are gaps in the first stage planting, now 8 years old.



Snow on Mt Wainui last Tuesday morning

## Last working bee, August 1st

100 *Carex secta* planted, many were able to be split in two as well as a heap more trees along the *Carex* Valley slopes and along the stream.



**Many thanks to:** Theo Barsanti, Bruce Bulmer, Dawn Bush, Richard Caldwell, Paul Callister, Bernard Cammack, Sue Campbell, Shane Cave, Denys Crengle, Ann Evans, Linda Hill, Michael Keith, Peter Kentish, Brian Law, Jan Nisbet, Ian Redward, Sandra Rowland, Ellen Soulliere, Noel Sundgren, Janet Walker, Matt Whittaker, Shane Williamson and welcome to new volunteers Liz Morton and Kate Drury. Nicola Easthope and Al brought along carpet squares which had been cut by their daughter Savannah.



Al & Nicola (who donated \$1000 for plants in the Dell in 2007 & have grown lots of nikau). The Tuesday morning blackberry gang met a challenge just getting to their worksite this week with high stream flow and fallen branches. It did not stop them!



Over 50,000 native tree seedlings have now been planted on the southern ridges. A fantastic achievement by the GroundTruth team.



Small native trees high on the hills



Upper Ti Kouka. Two naughty sheep on the wrong side of the fence. They were removed but were back a week later – now sent home to Baring Head. Spots for new plants on the right, our plantings from last year in the middle, looking good! Thanks, Rachel, for pics.



Jason culls hares to protect the plantings – his family appreciate the meals – all this from one hare! Also, a couple of new signs showing the diverted Forest Loop Track. Thanks DOC.

**DoC Head Office volunteer day Mon Sept 13th** – our volunteers are invited to join in a day working at the Cairn, along with DOC staff, planting, releasing and gorse clearing. Email us if coming - lunch will be provided. Meet 9am.

**Wellington Orienteering Club are holding an event at Whareroa on Aug 15<sup>th</sup>.**

**Next working bee: Sunday Sept 5<sup>th</sup> 9-noon. No sausage sizzle!**

At some time, there will be a ceremony with Rotary to recognise the Whareroa Forest of Peace and Remembrance but no date has been set.

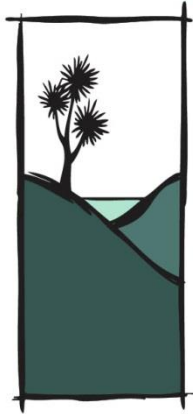
**Our contact details:**

[whareroa.guardians@gmail.com](mailto:whareroa.guardians@gmail.com) for email

<https://www.facebook.com/WhareroaGuardians> Additional info is posted here

<http://www.givealittle.co.nz/org/WhareroaG> for donations

And our new website: [www.kapitibiodiversity.org.nz/whareroa](http://www.kapitibiodiversity.org.nz/whareroa)



# WHAREROA GUARDIANS COMMUNITY TRUST

## Update 02 September 2021

---

### **No working bee in September due to delta variant**

We are fortunate in Kapiti to have escaped this outbreak so far. We are also lucky that most of our planting is complete; remaining plants can be kept for next season. Unfortunately, Lockdown has impacted on the contractors doing the mega planting on the hills. We hope their work can be completed this season.

We are awaiting “instructions” from DOC as to exactly what volunteers can do at Whareroa.

### **Last planting session, Aug 15th. Carex Valley**



We planted another 100 *Carex secta* in the boggy ground between the picnic site and the slope as well as filling in spots all the way up the valley to the Link Track. Some kowhai were placed at the blocked section of Forest Loop track.

Altogether about fifty “specimen” trees – kahikatea (staked) and pukatea and nikau were planted, some up the Ti Kouka Valley.

As usual, we enjoyed morning tea together and finished with sausage and onions back at base.

**Many thanks to:** Theo Barsanti, Bruce Bulmer, Dawn Bush, Richard Caldwell, Bernard Cammack, Rachel & Dave Calvert, Sue Campbell, Shane Cave, Denys Crengle, Gary Crilley, Michelle de La Rey, Ann Evans, Linda Hill, Peter Kentish, Jan Nisbet, John Rowland, Janet Walker, Shane Williamson and welcome to new volunteers Asa Petterson and Tora Fredstig. Also special thanks to Darrel and Diane Sutherland for catering at every session.



Shane negotiating the stream in LUV



The original *Carex*, standing alone in the valley

### Wellington Orienteering Club held an event at Whareroa on Aug 15<sup>th</sup>.

It was lovely to see nearly 200 participants, many of them children and teenagers racing around to find the controls. The weather was perfect and it seems to have been very successful.



One of the “controls”

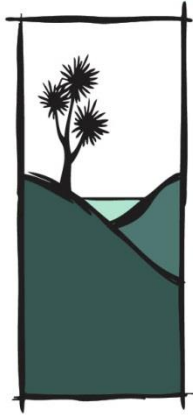


The car park was chocker

**Next working bee: Sunday October 3rd 9-noon, subject to Covid19.**

Our new website: [www.kapitibiodiversity.org.nz/whareroa](http://www.kapitibiodiversity.org.nz/whareroa) has old Updates to browse through.

**Keep safe and well**



# WHAREROA GUARDIANS COMMUNITY TRUST

## Update 01 October 2021

---

### **Next working bee Sunday October 3<sup>rd</sup> 9 to noon**

As we are still in Level 2 volunteers will need to bring their own morning tea, use their own tools or, if using Whareroa tools, not share them. They will be cleaned after use. You must keep 2m away from others and carry a mask if, in case of an emergency we need to get closer! Everyone welcome.

You can drive into the Hub but please keep the main gate closed. Follow the flags. We will again be working in Carex Valley, (beyond the Gums). There are more trees to plant. In addition, we plan to take about 60 small totara up Mamaku Valley; the track has been cleared and we will plant these totara in already sprayed spots. Volunteers will see an area of the farm not yet opened to the public though this is intended in the future.



Trees for planting

## Sheep Alert! Access and monitoring

Groundtruth have completed their planting for this year – about 60,000 native trees are in the ground with about 16,000 to go in during May next year. Good work Groundtruth.

Survival to date looks good but there are threats: hares, sheep and wind. Hares can do very significant damage – they bite off the plant and often don't eat it. Our hare culler has been out twice a week seeking them out. Sheep eat the new plants and can pull them out of the ground. Some of the fences on Whareroa are old. The Guardians have been working with the grazer and DOC to improve them and prevent sheep incursions. Many hours of volunteer activity have occurred especially by Bruce, Sandra, John, Denys and Ann.

If anyone sees sheep within the new plantings, please let us know – by email, Facebook or call 021 162 3559. If you can take a picture that is helpful. Thanks.



2 sheep on the wrong side of the fence.



A chewed and pulled out flax, sheep pool!

To monitor these plantings, volunteers have opened up a route up Mamaku Valley to give easier access to the tops of the ridge above Emerald Glen Road. The North/South fence above Emerald Glen Road is one key boundary, the fence down from the Rocks past Ti Kouka is the other. It was also necessary to mark the route so that trees were not planted on it.

Many thanks to Bernard and Ann for surveying the route (it is a 1 in 5 gradient so quite steep), John for 25 hours cutting it and Lynette and Richard for clearing vegetation in the lower section. Also, to Bruce, Shane & Shane for work on improving LUV access up Carex Valley. And to Bruce for new stiles: these provide access across fence lines without causing damage. You will be able to see this work on Sunday.

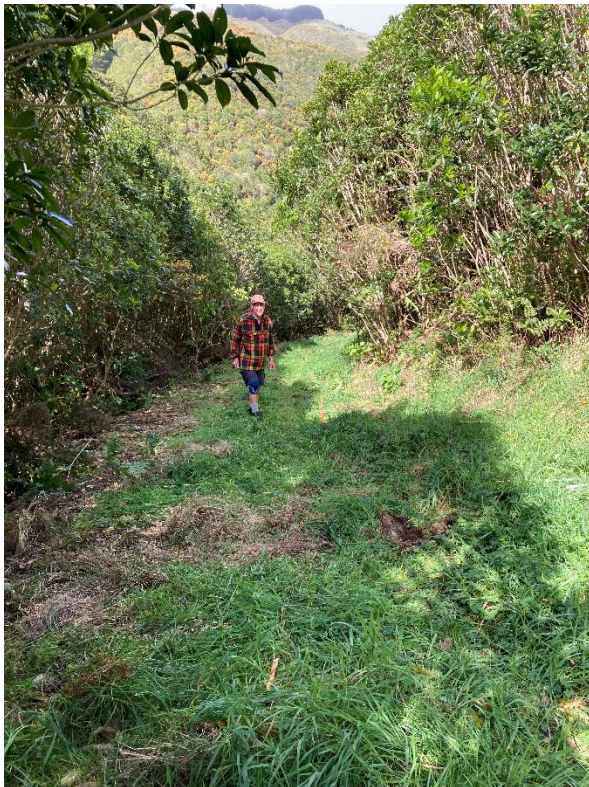
Also look out for a new picnic table in Carex Valley – details next time.



Bernard spraying the surveyed route



Part of the new route



Richard in a cleared section of the lower track



New stile giving access to the boundary fenceline

## Totara Ridge

In the meantime, Denys has worked for many hours cutting gorse along Totara Ridge, part of the Ramaroa Wetland. 4 years ago, over 60 totara were planted to form an avenue. Gorse has got away and we have had a couple of working bees to try and unsuccessfully) control it. One-man whirlwind Denys has succeeded and almost all the totara had survived. A fantastic job, many thanks Denys.



**Next working bee: Sunday November 7th 9-noon**

[www.kapitibiodiversity.org.nz/whareroa](http://www.kapitibiodiversity.org.nz/whareroa)  
[whareroa.guardians@gmail.com](mailto:whareroa.guardians@gmail.com) for email

<https://www.facebook.com/WhareroaGuardians> Additional info is posted here

<http://www.givealittle.co.nz/org/WhareroaG> for donations

*We have recently received some generous donations through "Give a Little". These are much appreciated, thank you to donors.*

*And of course, many many thanks to our volunteers who quietly beaver away week after week, year after year.*

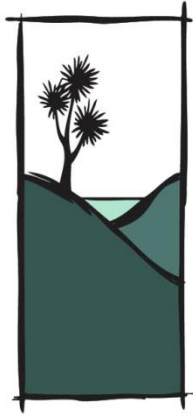




Plants hiding in the grass  
Best tools: grubbers, pruning saws, shears.



Some are easier to see than others



# WHAREROA GUARDIANS COMMUNITY TRUST

## Update 01 December 2021

---

### **Next working bee Sunday December 5<sup>th</sup>, 9 to noon**

Carex Valley – releasing this year's plants. The grass has grown +++.

Covid Restrictions: please will volunteers bring their own morning tea, use their own tools or, if using Whareroa tools, not share them. They will be cleaned after use. Please keep 1m away from others and carry a mask (in an emergency we may need to get closer!) Everyone welcome.

You can drive into the Hub but please keep the main gate closed. Follow the flags.



Plants hiding in the grass



Some are easier to see than others

Best tools: grubbers, pruning saws, shears.

## Last working bees: Oct 3<sup>rd</sup> and Nov 7<sup>th</sup>.

**October** saw more planting in Carex Valley and planting of totara and northern rata in Upper Mamaku Valley (pic below).

**Many thanks to:** Liffet Stewart, Sue Campbell, Shane Williamson, Ian Redward, Ellen Soulliere, Phil Curry, Peter Kentish, Dawn Bush, Sandra Rowland, Jan Nisbet, Ann Evans & Bernard Cammack

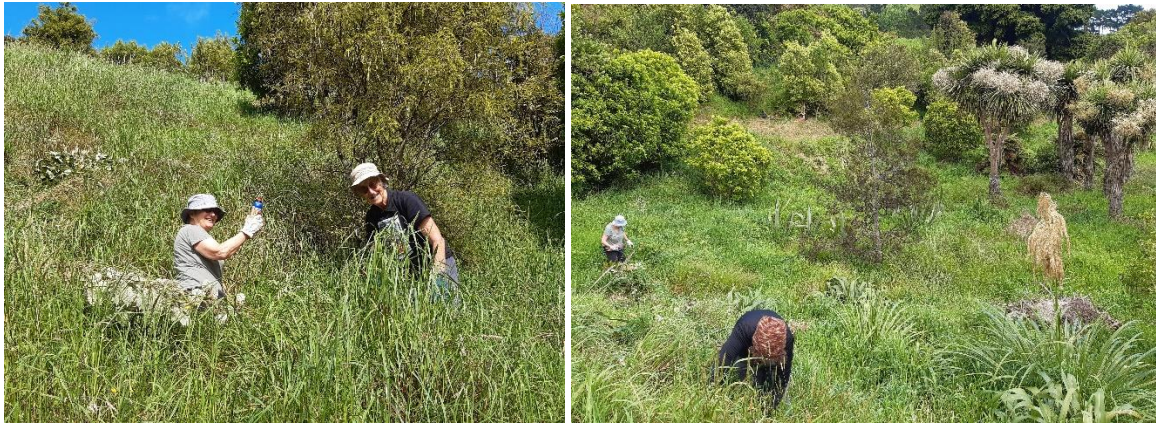


This new picnic table was built by Richard Caldwell. Richard has now made 5 of these as well as lots of small benches scattered along the tracks. Thanks heaps Richard, and to Theo for transporting and installation. And to Bruce who has placed all the small benches.

**In November** we worked in the Dell. Denys & Ann weeded the long grass, John, Janet & Phil raked it up, arum lily flower heads were chopped, others tackled blackberry and gorse. Bernard continued on the Dell Lookout bypass track. It was an excellent spring tidy up.



Jean & Sue with arum lily flowers to prevent seeding



Tackling blackberry

**Many thanks to:** Peter Kentish, John Rowland, Shane Williamson, Jean Macallan, Phil Curry, Ann Evans, Bruce Bulmer, Ian Redward, Sue Campbell, Janet Walker, Denys Crengle, Jan Nisbet & Bernard Cammack

## Foundation Trustee Carol Reihana

We are sad to report the death of Carol Reihana. Carol was a key person in the campaign to "Save" Whareroa Farm from subdivision in 2004/05, leading to it being gazetted as a recreation Reserve. Carol, her brother Karl and whanau held/hold the Ahi Kaa of Ngati Haumia Ki Paekakariki. Carol was a foundation iwi trustee of the Guardians and continued to take a keen interest in Whareroa even when unwell. Her quiet wisdom will be missed. Our condolences to Karl and her whanau.



The original trustees, November 2006: Rachel Kiel-Taylor, Michael Keith, Betty Perkins, Leon Kiel, John Lancashire, John Porter, Carol Reihana, Jenny Rowan & Ann Evans

## Bees and other volunteer activities



Theo and Liffet have been working regularly with our bees. A new swarm was obtained and there are now 2 hives. Both hives seem to have active bees and there are masses of native flowers for them.



QEP & Whareroa volunteers discuss planting for the 2022/23 Wetland project



Bruce has been extracting and removing old bundles of fencing in Upper Mamaku Valley

## 1500 Bamboo sticks needed!

Next winter we will need to protect our plantings from pukeko so 1500 cardboard EmGards have been bought. Each needs a bamboo stake about 900mm long and finger thickness. If you have bamboo please thin it and bring along to Whareroa – just leave by the shed.



**Nasty weed alert! *Senecio glastifolius*.** This is spreading up from the south and is a noxious weed. If you see it, please hack it out – or send us details of location for removal. Thanks



Lynette and Jan tackling the pest.

So much else is done at Whareroa – the blackberry bashers every Tuesday, Bruce and Denys mowing as well as other work, weedeating by Ann, spraying by Sandra, bird monitoring by Helen, sign erection by Shane & Shane, pest animal control by the trappers . . . We can't mention it all but it is much appreciated.

## Adopt a Plot?

Would you like to adopt a small area of trees in Carex Valley to nurture? Spring/early summer is peak grass growth and it smothers small trees. Some cope better than others. Shane W has adopted a patch between Five Ways Track and the Gums. Volunteers are invited to choose some trees and look after them over the next few weeks. The kahikatea, totara, pukatea & nikau are particularly important.

***We recently received a very generous donation of \$500 from Kane Armstrong of Focus Projects Ltd. He and co workers are keen mountain bikers and wanted to acknowledge the work of the Guardians. All donations go directly into the reserve. Many thanks guys.***

**Future working bee: Sunday February 7<sup>th</sup>, 9-noon (January is off)**

[www.kapitibiodiversity.org.nz/whareroa](http://www.kapitibiodiversity.org.nz/whareroa)  
[whareroa.guardians@gmail.com](mailto:whareroa.guardians@gmail.com) for email

<https://www.facebook.com/WhareroaGuardians> Additional info is posted here

<http://www.givealittle.co.nz/org/WhareroaG> for donations