

WHAREROA GUARDIANS COMMUNITY TRUST

Update 04 April 2024.

Next Working Bee Sun April 7th. 9am to noon.

Forecast is again for dry weather. We will work clearing weed in the stream by the Gums' crossing, there are some small gorse bushes nearby needing removing and releasing plants in Matai Bush Wetland. Everyone is welcome. Please bring your morning tea (Caravan @ 10.30). Follow the flags.

Last working Bee – Mar 3rd

We worked at the new wetland area by the culvert on the farm race – Lower Ramaroa Stream. We cleared masses of water weed from the stream and found and released lots of plants in the Wetland.



An unwelcome tree was found just downstream of the bridge – Japanese Walnut (see pic above). There are a few adults further up the stream, helping to hold the bank so we don't want to get rid of them. This is the first time a seedling has been spotted (and removed). We will have to keep an eye out for more.



Rachel & released pukatea



Martha



Shane & Sam



Peter, Shane & Sue rolling up celery weed

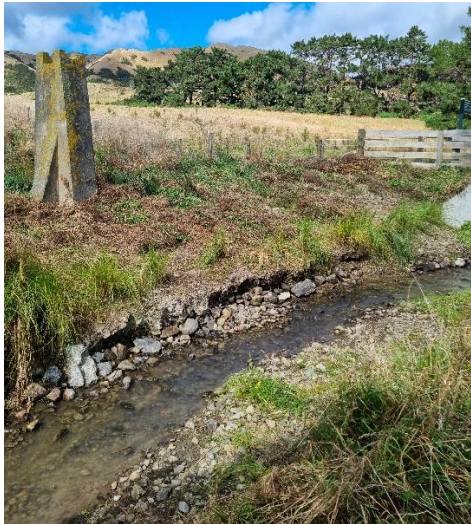


Denys clearing around wetland plants

Many thanks to: Rachel Calvert, Bernard Cammack, Sue Campbell, Denys Crengle, Ann Evans, Sam Ferguson, Peter Kentish, Bernard McManus, Jan Nisbet, Ian Redward, Matt & Martha Whittaker and Shane Williamson and everyone else who contributes.

Working bees certainly give us good exercise as well as good company. Some people can't get enough of stream weed clearing! Both Sue and Rachel are often found paddling in the stream, struggling with mats of weed. See result below. Bruce repaired the rickety steps by the caravan (pic below). The mowing team is out regularly and their work is much appreciated. And lots of other voluntary activity goes on – patching leaky pipes, reviewing the Farm Plan, working with DOC, clearing gorse, tending home nurseries etc.

Our web presence is looked after by Scott Hill in Switzerland who is also compiling a series of "Collections": Birds of Whareroa and Fish at Whareroa done so far, a wonderful resource.



Bernard has completed improvements in the Dell – to make access to the Dell Lookout and Giant Totara easy. The bare earth below has just been seeded, hopefully it will germinate as long as it's not too dry in the next few weeks. Ann has started spraying spots for planting this winter. Weed clearers are finding eels and koura (these fellows were released back).



Liffet spoke to a class of students at Paraparaumu College followed by a visit to Whareroa. Jan has been talking with teachers at Raumati South School about a future visit. We are keen to encourage students to use Whareroa – there is so much potential for outdoor education.

The Tramways Museum in QE Park included an article about Whareroa in their recent newsletter. Their collection is worth a visit.

Save the date! Monday June 17th 7pm AGM with guests from Capital Kiwi

Future working bees: May 5th. And early June, date to be advised. 9 to noon.

www.kapitibiodiversity.org.nz/whareroa website to find lots of background information